



宁波东洲传动件有限公司  
NINGBO DONGZHOU TRANSMISSION CO., LTD.



[www.nbdongzhou.cn](http://www.nbdongzhou.cn)

2016



 **DONGZHOU COMPANY**  
www.nbdongzhou.cn





# 公司简介

# COMPANY PROFILE

坐落于东海之滨-宁波，毗邻上海，宁波东洲传动件有限公司创建于2006年，是一家集研发、制造、贸易为一体的综合性、现代化企业。公司目前拥有300多台各类精密加工设备和多台专业检测设备仪器，主要生产各类球头球接、气缸接头、油缸接头、杆端关节轴承、向心关节轴承等汽车及机械零配件。同时还可以根据客户来图来样设计生产各类非标准件产品。

公司秉承科学发展观，以“开拓、进取、求是、创新”为人才观，积极培养、引进各类人才，已形成管理、技术、国际贸易等多层次、多学科的专业人才队伍。以“优质的产品、优惠的价格、优越的服务”为宗旨，严格按照客户要求，高标准、严要求地控制生产过程，做到每个环节都经过全面严格的质量检验。在保证产品质量的同时，不断改进技术，优化生产流程，提高效率，降低生产成本，为客户提供超高性价比的产品。在稳固现有生产能力的同时，我司注重开发新产品，开拓新市场，力求引进各种先进设备优化生产和掌握各种先进技能加强自我完善来更好、及时的服务客户。在东洲人的不懈努力下，我司已经通过了ISO9001：2008和ISO/TS16949：2009质量管理体系。

以诚实求是，合作共赢的理念，凭借开放的销售渠道，丰富的产品线，便捷的物流系统，完善的售后服务，我们的产品畅销国内，远销欧美、中东及东南亚等国家和地区，并深受客户青睐。

宁波东洲传动件有限公司竭诚期待与您携手共创辉煌的未来！

Established in 2006 and located in Ningbo, Ningbo Dongzhou Transmission Co., Ltd is a modern enterprise integrated with R&D, manufacture and trading. Dongzhou is specialized in manufacturing Clevises, Bolts, Clips, Rod Ends, Radial Spherical Plain Bearing, Ball Joints, Connectors of Pneumatic Cylinders and Hydraulic Cylinders, etc. Meanwhile, non-standard products can be designed and put into production as per samples or drawings accordingly.

Well equipped with more than 300 all kinds of precision machining equipments and professional testing instruments, Dongzhou holds the police of "excellent products, reasonable price and remarkable performance", pursuing the superiority in 3 P (products, price and performance). It dedicates to explore new products and markets as well as introduction of advanced equipments to optimize production and mastery of advanced techniques to achieve self-improvement.

With joint-effort of Dongzhou staff, our company has got ISO9001:2008 and ISO/TS16949 qualification. Based on the service principle of faithfulness, customer-oriented & win-win, our products are well welcomed both at home and abroad markets like USA, Europe, Middle East, Southeast Asia, etc.

Sincerely welcome to join hands with us to create a more prosperous future!



# MAIN PRODUCT



Rod Ends



Clevises, Clips and Pins



Ball Joints



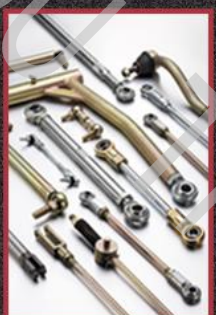
Radial Spherical Plain Bearings



Hardwares



Steering and Suspension Ball Joints

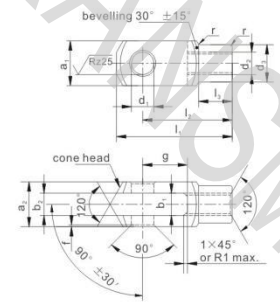


Linkages



U形叉及相配套的卡、销 Clevises, Clips and Pins

## U形叉-FK系列 DIN71752 / DIN ISO8140 / CETOP Clevises - FK Series DIN71752 / DIN ISO8140 / CETOP



型号 Part No.	尺寸 mm Dimensions											重量KG Weight			
	d <sub>1</sub> H9	g	a <sub>1</sub> H11	a <sub>2</sub> H10	b <sub>1</sub> B13	b <sub>2</sub> Adm. Variation	d <sub>2</sub> Regular Thread	d <sub>2</sub> Fine-pitch Thread	d <sub>1</sub> ±0.3	f ±0.2	l <sub>1</sub> ±0.5	l <sub>2</sub> Adm. Variation	l <sub>2</sub> ±0.2	r	Kg
FK 4×8	4	8	8	8	4	4	B13	M4×0.7	8	0.5	21	16 ±0.3	6.0	0.5	0.005
FK 4×16	4	16	8	8	4	4	B13	M4×0.7	8	0.5	29	24 ±0.3	6.0	0.5	0.007
FK 5×10	5	10	10	10	5	5	B13	M5×0.8	9	0.5	26	20 ±0.3	7.5	0.5	0.009
FK 5×20	5	20	10	10	5	5	B13	M5×0.8	9	0.5	36	30 ±0.3	7.5	0.5	0.013
FK 6×12	6	12	12	12	6	6	B13	M6×1	10	0.5	31	24 ±0.3	9.0	0.5	0.015
FK 6×24	6	24	12	12	6	6	B13	M6×1	10	0.5	43	36 ±0.4	9.0	0.5	0.021
FK 8×16	8	16	16	16	8	8	B13	M8×1.25	14	0.5	42	32 ±0.4	12.0	0.5	0.037
FK 8×16FG	8	16	16	16	8	8	B13	M8×1	14	0.5	42	32 ±0.4	12.0	0.5	0.037
FK 8×32	8	32	16	16	8	8	B13	M8×1.25	14	0.5	58	48 ±0.4	12.0	0.5	0.054
FK 8×32FG	8	32	16	16	8	8	B13	M8×1	14	0.5	58	48 ±0.4	12.0	0.5	0.054
FK 10×20	10	20	20	20	10	10	B13	M10×1.5	18	0.5	52	40 ±0.4	15.0	0.5	0.074
FK 10×20FG	10	20	20	20	10	10	B13	M10×1.25	18	0.5	52	40 ±0.4	15.0	0.5	0.074
FK 10×40	10	40	20	20	10	10	<sup>+0.1</sup> / <sub>-0.15</sub>	M10×1.5	18	0.5	72	60 ±0.4	15.0	0.5	0.116
FK 10×40FG	10	40	20	20	10	10	<sup>+0.1</sup> / <sub>-0.15</sub>	M10×1.25	18	0.5	72	60 ±0.4	15.0	0.5	0.116
FK 12×24	12	24	24	24	12	12	<sup>+0.1</sup> / <sub>-0.15</sub>	M12×1.75	20	0.5	62	48 ±0.4	18.0	0.5	0.121
FK 12×24FG	12	24	24	24	12	12	<sup>+0.1</sup> / <sub>-0.15</sub>	M12×1.25	20	0.5	62	48 ±0.4	18.0	0.5	0.121
FK 12×48	12	48	24	24	12	12	<sup>+0.1</sup> / <sub>-0.15</sub>	M12×1.75	20	0.5	86	72 ±0.4	18.0	0.5	0.175
FK 12×48FG	12	48	24	24	12	12	<sup>+0.1</sup> / <sub>-0.15</sub>	M12×1.25	20	0.5	86	72 ±0.4	18.0	0.5	0.175
FK 14×28	14	28	27	27	14	14	<sup>+0.1</sup> / <sub>-0.15</sub>	M14×2	24	1.0	72	56 ±0.4	22.5	1.0	0.178
FK 14×28FG	14	28	27	27	14	14	<sup>+0.1</sup> / <sub>-0.15</sub>	M14×1.5	24	1.0	72	56 ±0.4	22.5	1.0	0.178
FK 14×56	14	56	27	27	14	14	<sup>+0.1</sup> / <sub>-0.15</sub>	M14×2	24	1.0	101	85 ±0.4	22.5	1.0	0.258
FK 14×56FG	14	56	27	27	14	14	<sup>+0.1</sup> / <sub>-0.15</sub>	M14×1.5	24	1.0	101	85 ±0.4	22.5	1.0	0.258
FK 16×32	16	32	32	32	16	16	<sup>+0.1</sup> / <sub>-0.15</sub>	M16×2	26	1.0	83	64 ±0.4	24.0	1.0	0.282
FK 16×32FG	16	32	32	32	16	16	<sup>+0.1</sup> / <sub>-0.15</sub>	M16×1.5	26	1.0	83	64 ±0.4	24.0	1.0	0.282
FK 16×64	16	64	32	32	16	16	<sup>+0.1</sup> / <sub>-0.15</sub>	M16×2	26	1.0	115	96 ±0.4	24.0	1.0	0.411
FK 16×64FG	16	64	32	32	16	16	<sup>+0.1</sup> / <sub>-0.15</sub>	M16×1.5	26	1.0	115	96 ±0.4	24.0	1.0	0.411

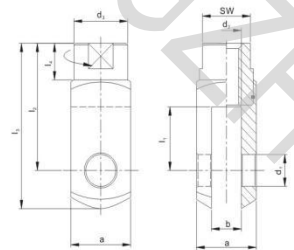


型号 Part No.	尺寸 mm Dimensions											重量KG Weight			
	d <sub>1</sub> H9	g ±0.5	a <sub>1</sub> H11	a <sub>2</sub> ±0.25	b <sub>1</sub> H13	b <sub>2</sub> ±0.15	d <sub>2</sub> Regular thread	d <sub>3</sub> Fine-pitch thread	f ±0.3	l <sub>1</sub> ±0.2	l <sub>2</sub> ±0.5		l <sub>3</sub> ±0.4	l <sub>4</sub> ±0.5	r
FK 18×36	18	36	36	36	18	18	M18×2.5	30	1.0	94	72	±0.4	27.0	1.5	0.39
FK 18×36FG	18	36	36	36	18	18	M18×1.5	30	1.0	94	72	±0.4	27.0	1.5	0.39
FK 20×40	20	40	40	40	20	20	M20×2.5	34	1.0	105	80	±0.4	30.0	1.5	0.55
FK 20×40FG	20	40	40	40	20	20	M20×1.5	34	1.0	105	80	±0.4	30.0	1.5	0.55
FK 20×80	20	80	40	40	20	20	M20×2.5	34	1.0	145	120	±0.4	30.0	1.5	0.80
FK 20×80FG	20	80	40	40	20	20	M20×1.5	34	1.0	145	120	±0.4	30.0	1.5	0.80
FK 25×50	25	50	50	50	25	25	M24×3	42	1.5	132	100	±0.4	36.0	1.5	1.10
FK 25×50FG	25	50	50	50	25	25	M24×2	42	1.5	132	100	±0.4	36.0	1.5	1.10
FK 28×56	28	56	55	55	28	28	M27×3	48	1.5	148	112	±0.4	40.0	2.0	1.50
FK 28×56FG	28	56	55	55	28	28	M27×2	48	1.5	148	112	±0.4	40.0	2.0	1.50
FK 30×54FG	30	54	55	55	30	30	M27×2	48	1.5	148	110	±0.4	40.0	2.0	1.44
FK 30×60	30	60	60	60	30	30	M30×3.5	52	1.5	160	120	±0.4	42.0	2.0	1.97
FK 30×60FG	30	60	60	60	30	30	M30×2	52	1.5	160	120	±0.4	42.0	2.0	1.97
FK 35×54FG	35	54	70	70	35	35	M36×2	60	2.0	188	144	±0.4	54.0	3.0	2.93
FK 35×72	35	72	70	70	35	35	M36×4	60	2.0	188	144	±0.4	54.0	3.0	2.93
FK 35×72FG	35	72	70	70	35	35	M36×2	60	2.0	188	144	±0.4	54.0	3.0	2.93
FK 36×72	35	72	70	70	36	36	M36×4	60	2.0	188	144	±0.4	54.0	3.0	2.93
FK 36×72FG	35	72	70	70	36	36	M36×2	60	2.0	188	144	±0.4	54.0	3.0	2.93
FK 40×84FG	40	84	85	85	40	40	M42×2	70	3.0	232	168	±0.4	63.5	5.0	5.64
FK 42×84	42	84	85	85	42	42	M42×4.5	70	3.0	232	168	±0.4	63.5	5.0	5.34
FK 42×84FG	42	84	85	85	42	42	M42×2	70	3.0	232	168	±0.4	63.5	5.0	5.34
FK 50×96	50	96	96	96	50	50	M48×5	82	3.0	265	192	±0.4	73.0	5.0	7.86
FK 50×96FG	50	96	96	96	50	50	M48×2	82	3.0	265	192	±0.4	73.0	5.0	7.86

U形叉及相配套的卡，销 Clevises, Clips and Pins



Rotating Shaft

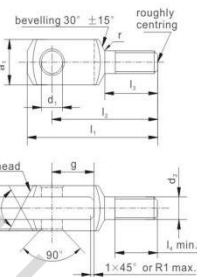


型号 Part No.	尺寸 mm Dimensions										静载荷(N) Static load	重量KG Weight
	a	b	d <sub>1</sub>	d <sub>2</sub>	d <sub>3</sub>	l <sub>1</sub>	l <sub>2</sub>	l <sub>3</sub>	l <sub>4</sub>	sw		
FKR4×8	8	4	4	M4	8	8	16	21	3.0	6	500	0.006
FKR4×16	8	4	4	M4	8	16	24	29	3.0	6	500	0.008
FKR5×10	10	5	5	M5	9	10	20	26	4.0	7	800	0.010
FKR5×20	10	5	5	M5	9	20	30	36	4.0	7	800	0.014
FKR6×12	12	6	6	M6	10	12	24	31	5.5	9	2400	0.016
FKR6×24	12	6	6	M6	10	24	36	43	5.5	9	2400	0.023
FKR8×16	16	8	8	M8	14	16	32	42	8.0	12	3400	0.038
FKR8×32	16	8	8	M8	14	32	48	58	8.0	12	3400	0.055
FKR10×20	20	10	10	M10	18	20	40	52	11.5	16	6000	0.080
FKR10×40	20	10	10	M10	18	40	60	72	11.5	16	6000	0.120
FKR12×24	24	12	12	M12	20	24	48	62	14.0	18	14000	0.125
FKR12×48	24	12	12	M12	20	48	72	86	14.0	18	14000	0.180
FKR14×28	27	14	14	M14	24	28	56	72	18.5	22	16000	0.190
FKR14×56	27	14	14	M14	24	56	85	101	18.5	22	16000	0.265
FKR16×32	32	16	16	M16	26	32	64	83	20.0	24	18000	0.300
FKR16×64	32	16	16	M16	26	64	96	115	20.0	24	18000	0.430

螺纹型号：细牙-FG，左螺纹-LH，细牙左螺纹-FGLH  
材料与表面处理方式：  
1) 低碳钢Q235A；表面防锈油，镀锌或者镀镍处理。  
2) 可选用不锈钢304，不锈钢316，表面钝化处理。  
3) 可选用铝 6061；表面清洗或者阳极氧化。  
4) 可选用中碳钢45；表面防锈油，镀锌或者镀镍处理。

Code of thread: fine-pitch thread-FG, left-handed thread-LH, fine-pitch and left-handed thread-FGLH.  
Material and surface treatments:  
1) Low carbon steel Q235A; Coated with rust-proof oil, zinc plating or nickel plating.  
2) Alternative stainless steel 304, stainless steel 316; Surface passivation.  
3) Alternative aluminum 6061; Surface cleaning, or anodizing finish.  
4) Alternative medium carbon steel 45; Coated with rust-proof oil, zinc plating or nickel plating.

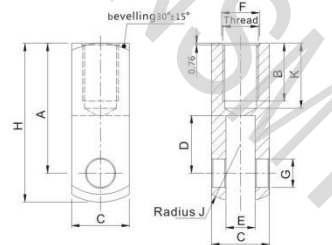
U形叉-外螺纹FT系列 DIN71752 / DIN ISO8140 / CETOP  
Clevises with Male Thread FT Series DIN71752 / DIN ISO8140 / CETOP



型号 Part No.	尺寸 mm Dimensions											重量KG Weight		
	d <sub>1</sub> H9	g ±0.5	a <sub>1</sub> H11	a <sub>2</sub> ±0.25	b ±0.15	d <sub>2</sub> Regular thread	f Fine-pitch thread	l <sub>1</sub> ±0.2	l <sub>2</sub> ±0.4	l <sub>3</sub> ±0.2	l <sub>4</sub> ±0.2		r	Kg <sup>m</sup>
FT 6×12	6	12	12	12	6	M6×1	—	0.5	44	37	20	15	0.8	0.015
FT 8×16	8	16	16	16	8	M8×1.25	—	0.5	57	47	25	20	0.8	0.036
FT 10×20	10	20	20	20	10	M10×1.5	—	0.5	69	57	30	25	0.8	0.068
FT 12×24	12	24	24	24	12	M12×1.75	—	0.5	82	68	35	30	0.8	0.122
FT 14×28	14	28	27	27	14	M14×2	—	1.0	94	78	40	35	1.2	0.171
FT 16×32	16	32	32	32	16	M16×2	—	1.0	108	89	45	40	1.2	0.288
FT 20×40	20	40	40	40	20	M20×2.5	—	1.0	134	109	55	50	1.5	0.550

U形叉及相配套的卡，销 Clevises, Clips and Pins

U形叉-FU系列  
Clevises-FU series

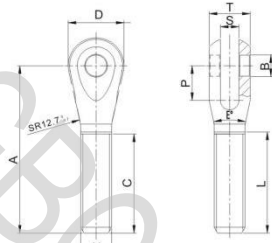


型号 Part No.	Thread Class 2B	尺寸 inch Dimensions										
		A ±0.15	B ±0.125	C ±0.10	D ±0.15	E ±0.10 ±0.09	F ±0.10	G ±0.03 ±0.01	H ±0.15	I ±0.03 ±0.01	J ±0.03	K
FU-5-40	5-40	0.437	Thru	0.250	0.250	0.130	0.140	0.128	0.562	0.101	0.250	Thru
FU-10-32	10-32	0.750	0.375	0.375	0.375	0.190	0.218	0.187	0.937	0.161	0.375	Thru
FU-1/4-28	1/4-28	0.937	0.500	0.500	0.437	0.255	0.281	0.250	1.187	0.213	0.500	Thru
FU-5/16-24	5/16-24	0.937	0.500	0.500	0.437	0.255	0.343	0.250	1.187	0.272	0.500	0.625
FU-3/8-24	3/8-24	1.312	0.750	0.750	0.562	0.380	0.406	0.375	1.687	0.332	0.750	Thru
FU-7/16-20	7/16-20	1.312	0.750	0.750	0.562	0.380	0.468	0.375	1.687	0.391	0.750	0.875
FU-1/2-20	1/2-20	1.312	0.750	0.750	0.562	0.380	0.531	0.375	1.687	0.453	0.750	0.875
FU-5/8-18	5/8-18	2.250	1.000	1.000	1.000	0.505	0.656	0.500	2.750	0.578	1.000	1.125

螺纹型号：左螺纹-LH，细牙U-5-40LH  
材料与表面处理方式：  
1) 低碳钢Q235A；表面防锈油，镀锌或者镀镍处理。  
2) 可选用不锈钢304，不锈钢316，表面钝化处理。  
3) 可选用铝6061；表面清洗或者阳极氧化。

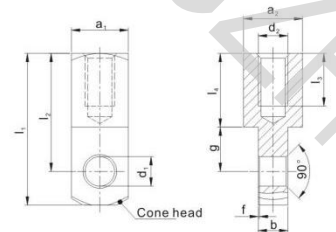
Code of thread: left-handed thread-LH, E.g. U-5-40LH.  
Material and surface treatments:  
1) Low carbon steel Q235A; Coated with rust-proof oil, zinc plating or nickel plating.  
2) Alternative stainless steel 304, stainless steel 316; Surface passivation.  
3) Alternative aluminum 6061; Surface cleaning or anodizing finish.





型号 Part No.	尺寸 inch Dimensions									
	A ±0.15	B +0.005 -0.009	C +0.02 -0.01	D ±0.10	E Angle	L ±0.15	P +0.10 -0.09	S ±0.005	T ±0.005	N Thread UNF-2A
FC4-5	2.250	0.250	1.250	0.875	40	1.290	0.550	0.188	0.625	5/16-24
FC5-5	2.250	0.313	1.250	0.875	40	1.290	0.550	0.188	0.625	5/16-24
FC5-6	2.250	0.313	1.250	0.875	36	1.290	0.550	0.188	0.625	3/8-24
FC5-8	2.500	0.313	1.500	1.000	38	1.540	0.550	0.250	0.750	1/2-20
FC6-8	2.500	0.375	1.500	1.000	38	1.540	0.550	0.250	0.750	1/2-20
FC6-10	3.375	0.375	2.000	1.125	24	2.040	0.550	0.375	0.825	5/8-18
FC6-12	3.375	0.375	2.000	1.125	18	2.040	0.800	0.375	0.825	3/4-16
FC7-8	3.375	0.438	2.000	1.125	30	2.040	0.550	0.375	0.825	1/2-20
FC7-10	3.375	0.438	2.000	1.125	24	2.040	0.700	0.375	0.825	5/8-18
FC8-10	3.375	0.500	2.000	1.125	24	2.040	0.700	0.375	0.825	5/8-18
FC8-12	3.375	0.500	2.000	1.125	18	2.040	0.800	0.250	0.825	3/4-16
FC8-12-1	3.375	0.500	2.000	1.125	18	2.040	0.700	0.375	0.825	3/4-16

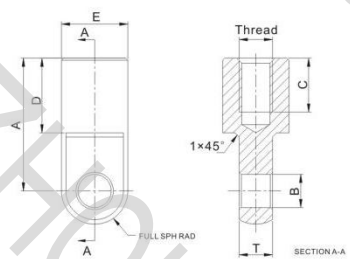
螺纹型号：左螺纹 - LH，如FC5-5LH。  
材料与表面处理方式：  
1) 中碳钢45，表面防锈油，镀锌或者镀镍处理。  
2) 可选用不锈钢304，不锈钢303，不锈钢316，表面钝化处理。  
3) 可选用6061，表面清洗或者阳极氧化。  
4) 可选用合金钢35CrMo，表面防锈油，镀锌或者镀镍处理。  
Code of thread: left-handed thread - LH, E.g. FC5-5LH.  
Material and surface treatments:  
1) Medium carbon steel 45; Coated with rust-proof oil, zinc plating or nickel plating.  
2) Alternative stainless steel 304, stainless steel 303, stainless steel 316; Surface passivation.  
3) Alternative aluminum 6061; Surface cleaning or anodizing finish.  
4) Alternative alloy steel 35CrMo; Coated with rust-proof oil, zinc plating or nickel plating.



型号 Part No.	尺寸 mm Dimensions													重量KG Weight
	d <sub>1</sub> H9	g ±0.5	h <sub>11</sub>	a <sub>1</sub> h11	b ±0.2	Regular thread d <sub>2</sub>	Fine-pitch thread	f ±0.2	i <sub>1</sub> ±0.5	i <sub>2</sub> ±0.3	i <sub>3</sub>	i <sub>4</sub> ±0.2		
FE 4×8	4	6	8	8	4	M4×0.7		0.5	2.1	16	6	10.0	0.006	
FE 5×10	5	7.5	10	10	5	M5×0.8		0.5	26	20	8	12.5	0.012	
FE 6×12	6	9	12	12	6	M6×1		0.5	31	24	11	15.0	0.021	
FE 8×16	8	12	16	16	8	M8×1.25		0.5	42	32	14	20.0	0.051	
FE 8×16FG	8	12	16	16	8		M8×1	0.5	42	32	14	20.0	0.051	
FE 10×20	10	15	20	20	10	M10×1.5		0.5	52	40	18	25.0	0.098	
FE 10×20FG	10	15	20	20	10		M10×1.25	0.5	52	40	18	25.0	0.098	
FE 12×24	12	18	24	24	12	M12×1.75		0.5	62	48	22	30.0	0.168	
FE 12×24FG	12	18	24	24	12		M12×1.25	0.5	62	48	22	30.0	0.167	
FE 14×28	14	21	27	27	14	M14×2		1.0	72	56	25	35.0	0.247	
FE 14×28FG	14	21	27	27	14		M14×1.5	1.0	72	56	25	35.0	0.245	
FE 16×32	16	24	32	32	16	M16×2		1.0	83	64	30	40.0	0.397	
FE 16×32FG	16	24	32	32	16		M16×1.5	1.0	83	64	30	40.0	0.395	
FE 20×40	20	30	40	40	20	M20×2.5		1.0	105	80	36	50.0	0.783	
FE 20×40FG	20	30	40	40	20		M20×1.5	1.0	105	80	36	50.0	0.776	

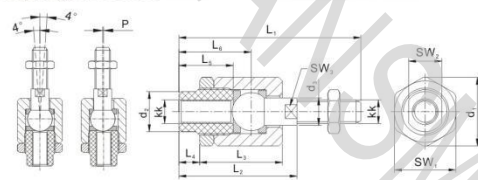
螺纹型号：细牙 - FG，左螺纹 - LH，细牙左螺纹 - FGLH。  
材料与表面处理方式：  
1) 低碳钢Q235A，表面防锈油，镀锌或者镀镍处理。  
2) 可选用不锈钢304，不锈钢303，不锈钢316，表面钝化处理。  
3) 可选用6061，表面清洗或者阳极氧化。  
4) 可选用中碳钢45，表面防锈油，镀锌或者镀镍处理。  
Code of thread: fine-pitch thread - FG, left-handed thread - LH, fine-pitch and left-handed thread - FGLH.  
Material and surface treatments:  
1) Low carbon steel Q235A; Coated with rust-proof oil, zinc plating or nickel plating.  
2) Alternative stainless steel 304, stainless steel 303, stainless steel 316; Surface passivation.  
3) Alternative aluminum 6061; Surface cleaning or anodizing finish.  
4) Alternative medium carbon steel 45; Coated with rust-proof oil, zinc plating or nickel plating.

U形叉及相配套的卡、销 Clevises, Clips and Pins



型号 Part No.	尺寸 mm Dimensions					
	Thread RH	A ±0.25	B +0.1 -0	C min	D ±0.25	T ±0.12
FKE5	M5×0.8	22	6.10	9.00	12.50	12.70
FKE6	M6×1	25	8.10	10.50	14.00	12.70
FKE8	M8×1.25	32	8.10	12.70	18.00	16.00
FKE10	M10×1.5	32	10.10	12.50	18.00	16.00

螺纹型号：细牙 - FG，左螺纹 - LH，细牙左螺纹 - FGLH。  
材料与表面处理方式：  
1) 低碳钢Q235A，表面防锈油，镀锌或者镀镍处理。  
2) 可选用不锈钢304，不锈钢303，不锈钢316，表面钝化处理。  
3) 可选用中碳钢45，表面防锈油，镀锌或者镀镍处理。  
Code of thread: fine-pitch thread - FG, left-handed thread - LH, fine-pitch and left-handed thread - FGLH.  
Material and surface treatments:  
1) Low carbon steel Q235A; Coated with rust-proof oil, zinc plating or nickel plating.  
2) Alternative stainless steel 304, stainless steel 303, stainless steel 316; Surface passivation.  
3) Alternative medium carbon steel 45; Coated with rust-proof oil, zinc plating or nickel plating.



型号 Part No.	尺寸 mm Dimensions													重量KG Weight	
	d <sub>1</sub>	d <sub>2</sub>	d <sub>3</sub>	kk	L <sub>1</sub>	L <sub>2</sub>	L <sub>3</sub>	L <sub>4</sub>	L <sub>5</sub>	L <sub>6</sub>	SW, SW <sub>1</sub> , SW <sub>2</sub> , SW <sub>3</sub>	P			
FI-M4X0.7	/	/	3.8	M4X0.7	33.0	24.0	16.5	4.5	12.5	16.0	11	11	3.2	0.5	0.015
FI-6-32	/	/	3.8	6-32 UNF-2B	33.0	24.0	16.5	4.5	12.5	16.0	11	11	3.2	0.5	0.015
FI-10-32	/	/	3.8	10-32 UNF-2B	33.0	24.0	16.5	4.5	12.5	16.0	11	11	3.2	0.5	0.015
FI-M5X0.8	14.5	8.5	5.8	M5X0.8	38.5	25.0	17.5	4.4	11.5	15.7	13	7	5	0.5	0.020
FI-M6X1	14.5	8.5	5.8	M6X1	37.0	25.0	17.5	4.4	11.5	15.7	13	7	5	0.5	0.023
FI-M8X1.25	19.0	12.5	7.8	M8X1.25	49.0	34.0	23.5	6.0	14.0	20.5	17	10	7	0.5	0.050
FI-5/16-24	19.0	12.5	7.8	5/16-24 UNF-2B	49.0	34.0	23.5	6.0	14.0	20.5	17	10	7	0.5	0.050
FI-M10X1.5	32.5	21.4	13.8	M10X1.5	67.5	49.5	34.0	9.0	23.0	31.0	30	19	12	0.7	0.210
FI-M10X1.25	32.5	21.4	13.8	M10×1.25	69.5	49.5	34.0	9.0	23.0	31.0	30	19	12	0.7	0.210
FI-3/8-24	32.5	21.4	13.8	3/8-24 UNF-2B	69.5	49.5	34.0	9.0	23.0	31.0	30	19	12	0.7	0.210
FI-M12X1.75	32.5	21.4	13.8	M12X1.75	70.5	49.5	34.0	9.0	23.0	31.0	30	19	12	0.7	0.210
FI-M12X1.25	32.5	21.4	13.8	M12×1.25	74.5	50.5	34.0	10.0	24.0	32.0	30	19	12	0.7	0.215
FI-1/2-20	32.5	21.4	13.8	1/2-20 UNF-2B	74.5	50.5	34.0	10.0	24.0	32.0	30	19	12	0.7	0.215
FI-M16X2	45.0	33.8	22.0	M16X2	97.0	71.0	53.0	10.0	32.0	44.5	41	30	19	1.0	0.670
FI-M16X1.5	45.0	33.8	22.0	M16×1.5	103.0	71.0	53.0	10.0	32.0	44.5	41	30	19	1.0	0.650
FI-5/8-18	45.0	33.8	22.0	5/8-18 UNF-2B	103.0	71.0	53.0	10.0	32.0	44.5	41	30	19	1.0	0.650
FI-M20X1.5	45.0	33.8	22.0	M20×1.5	120.0	80.0	53.0	19.0	41.0	53.5	41	30	19	1.0	0.720
FI-3/4-16	45.0	33.8	22.0	3/4-16 UNF-2B	120.0	80.0	53.0	19.0	41.0	53.5	41	30	19	1.0	0.720
FI-M27X2	62.0	61.7	27.9	M27×2	156.9	102.9	79.0	12.2	42.0	62.6	55	55	24	1.0	2.100
FI-1-12	62.0	61.7	27.9	1-12 UNF-2B	156.9	102.9	79.0	12.2	42.0	62.6	55	55	24	1.0	2.100
FI-M36X2	80.0	80.0	38.0	M36×2	251.0	179.0	136.0	22.0	78.0	110.0	75	75	32	1.0	5.800
FI-1 1/2-12	80.0	80.0	38.0	1 1/2-12 UNF-2B	251.0	179.0	136.0	22.0	78.0	110.0	75	75	32	1.0	5.800

材料与表面处理方式：  
球头销，球形垫圈：20CrMo，热处理，表面镀锌。  
螺栓，螺母，六角螺母：低碳钢Q235A，表面镀锌。  
可选用不锈钢304材质，表面钝化处理。  
Material and surface treatments:  
Ball stud and spherical washer: 20CrMo; Heat treatment and zinc plating.  
Housing, threaded bushing and hex nut: low carbon steel Q235A; Zinc plating.  
Alternative material: stainless steel 304. Surface passivation.

U形叉及相配套的卡、销 Clevises, Clips and Pins



**可折叠的弹簧销 - CL 系列**  
Folding Spring Bolts - CL Series

DONGZHOU COMPANY

**销钉-PC系列**  
Bolts-PC Series

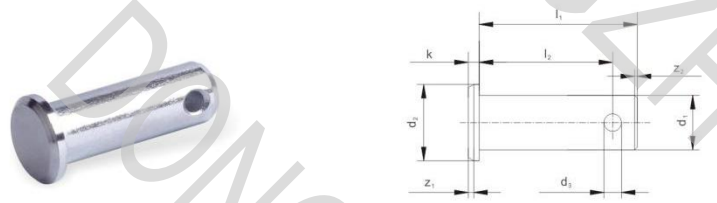
DONGZHOU COMPANY



型号 Part No.	配套的U形叉 Suitable for clevis	尺寸 mm Dimensions									重量KG Weight
		d <sub>1</sub> h11	g	a	b	l <sub>1</sub>	l <sub>2</sub>	l <sub>3</sub>	d	g	Kg/100 pieces
CL4×8	FK4×8	4	8	9.5	11.0	19.0	15.0	4.5			0.145
CL4×16	FK4×16	4	16	9.5	11.0	26.0	23.5	4.5			0.174
CL5×10	FK5×10	5	10	12.0	13.5	23.0	19.0	5.5			0.254
CL5×20	FK5×20	5	20	12.0	13.5	33.0	29.0	5.5			0.310
CL6×12	FK6×12	6	12	14.0	16.0	28.0	23.0	6.5			0.458
CL6×24	FK6×24	6	24	14.0	16.0	40.0	35.0	6.5			0.516
CL8×16	FK8×16	8	16	19.0	21.5	37.0	30.0	8.0			1.059
CL8×32	FK8×32	8	32	19.0	21.5	52.0	46.0	8.0			1.155
CL10×20	FK10×20	10	20	23.0	26.0	46.0	38.0	10.0			1.938
CL10×40	FK10×40	10	40	23.0	26.0	66.0	58.0	10.0			2.046
CL12×24	FK12×24	12	24	28.0	31.0	53.0	45.0	12.0			3.306
CL12×48	FK12×48	12	48	28.0	31.0	78.0	69.0	12.0			3.500
CL14×28	FK14×28	14	28	31.0	34.0	62.0	52.0	14.0			4.722
CL14×56	FK14×56	14	56	31.0	34.0	92.0	82.0	14.0			5.076
CL16×32	FK16×32	16	32	36.0	39.0	73.0	62.0	16.0			6.940
CL16×64	FK16×64	16	64	36.0	39.0	103.0	92.0	16.0			7.440
CL20×40	FK20×40	20	40	45.0	50.0	87.5	71.5	16.0			13.00

材料与表面处理方式：  
销子：低碳钢Q235A；弹簧：弹簧钢，硬度为430-500HV，  
表面防锈油；镀锌或者镀镍处理。

Material and surface treatments:  
Bolt: low carbon steel Q235A; Springs: spring steel, hardness approx. 430-500HV,  
Coated with rust proof oil, zinc plating or nickel plating.



型号 Part No.	尺寸 mm Dimensions									重量KG Weight
	d <sub>1</sub> h11	d <sub>2</sub> h14	d <sub>3</sub> H14	l <sub>1</sub> j15	l <sub>2</sub> +0.5	k h14	z <sub>1</sub>	z <sub>2</sub>		Kg/100 pieces
PC 4	4	6	1.0	12	10.0	1.0	0.5	0.8		0.13
PC 5	5	8	1.0	15	12.3	1.5	0.5	0.8		0.26
PC 6	6	9	1.6	18	15.3	1.5	0.5	1.0		0.46
PC 8	8	12	2.0	23	19.5	2.0	1.0	1.0		1.00
PC 10	10	14	3.2	29	24.5	2.0	1.0	1.5		1.90
PC 12	12	17	4.0	35	29.5	3.0	1.5	1.5		3.40
PC 14	14	19	4.0	40	32.5	3.0	1.5	1.5		5.30
PC 16	16	20	4.0	45	38.2	3.5	1.5	1.5		7.20
PC 18	18	25	5.0	50	43.5	3.5	1.5	1.5		10.4
PC 20	20	28	5.0	53	47.0	4.0	2.0	1.5		13.9
PC 25	25	34	6.3	67	59.0	5.5	3.0	1.5		26.6
PC 28	28	34	6.3	72	63.2	5.5	3.0	2.0		36.1
PC 30	30	36	6.3	67	59.0	5.5	3.0	2.0		38.3
PC 30-1	30	36	6.3	77	68.2	5.5	3.0	2.0		42.8
PC 35	35	45	8.0	87	76.5	7.0	3.0	2.0		67.7
PC 40	40	48	8.0	100	90.0	6.0	3.0	5.0		103.5
PC 42	42	48	8.0	100	90.0	7.0	3.0	5.0		115.1
PC 50	50	58	10.0	115	103.0	7.0	3.0	6.0		184.6

材料与表面处理方式：  
1) 低碳钢Q235A；表面防锈油，镀锌或者镀镍处理。  
2) 可选用不锈钢304，不锈钢303，不锈钢316，表面钝化处理。  
3) 可选用铝6061，表面清洗；或者阳极氧化。  
4) 可选用中碳钢45；表面防锈油，镀锌或者镀镍处理。

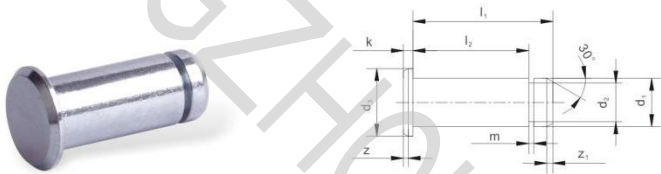
Material and surface treatments:  
1) Low carbon steel Q235A; Coated with rust-proof oil, zinc plating or nickel plating.  
2) Alternative stainless steel 304, stainless steel 303, stainless steel 316; Surface passivation.  
3) Alternative aluminum 6061; Surface cleaning, or anodizing finish.  
4) Alternative medium carbon steel 45; Coated with rust-proof oil, zinc plating or nickel plating.

**销钉-PM系列**  
Bolts-PM Series

DONGZHOU COMPANY

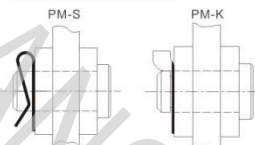
**销钉-PF系列**  
Bolts-PF Series

DONGZHOU COMPANY



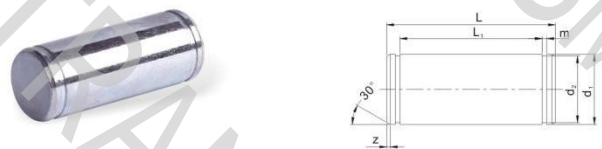
型号 Part No.	配套的 Suitable		尺寸 mm Dimensions										重量KG Weight
	PM-K	PM-S	d <sub>1</sub> h11	d <sub>2</sub> h14	l <sub>1</sub> j15	l <sub>2</sub> +0.3	k	d <sub>3</sub> -0.2	m +0.1	z	z <sub>1</sub>	z <sub>2</sub>	Kg/100 pieces
PM 4	4	4	4	6	10.5	8.5	1.0	3.2	0.64	0.5	0.50	0.12	
PM 5	5	5	5	8	13.0	10.5	1.5	4.0	0.74	0.5	0.50	0.24	
PM 6	6	6	6	9	15.5	12.5	1.5	5.0	0.74	0.5	0.75	0.42	
PM 8	8	8	8	12	20.0	16.5	2.0	6.0	0.94	1.0	1.00	0.90	
PM 10	10	10	10	14	25.0	20.5	2.0	8.0	1.05	1.0	1.00	1.70	
PM 12	12	12	12	17	30.0	24.5	3.0	9.0	1.15	1.5	1.25	2.95	
PM 14	14	14	14	20	33.0	27.5	2.5	10.0	1.25	1.5	1.25	4.10	
PM 16	16	16	16	20	38.5	32.5	3.5	12.0	1.35	1.5	1.50	6.20	
PM 18	16	—	18	25	42.0	36.5	3.5	13.0	1.35	2.0	1.50	8.95	
PM 20	24	—	20	28	46.0	40.5	4.0	17.5	1.80	2.0	1.50	12.1	
PM 25	24	—	25	34	57.0	50.5	5.5	18.0	1.80	2.0	1.50	23.1	

装配图Example of application:



材料与表面处理方式：  
1) 低碳钢Q235A；表面防锈油，镀锌或者镀镍处理。  
2) 可选用不锈钢304，不锈钢303，不锈钢316，表面钝化处理。  
3) 可选用铝6061，表面清洗；或者阳极氧化。  
4) 可选用中碳钢45；表面防锈油，镀锌或者镀镍处理。

Material and surface treatments:  
1) Low carbon steel Q235A; Coated with rust-proof oil, zinc plating or nickel plating.  
2) Alternative stainless steel 304, stainless steel 303, stainless steel 316; Surface passivation.  
3) Alternative aluminum 6061; Surface cleaning, or anodizing finish.  
4) Alternative medium carbon steel 45; Coated with rust-proof oil, zinc plating or nickel plating.



型号 Part No.	尺寸 mm Dimensions						重量KG Weight
	d <sub>1</sub> h11	l +0.30 0	d <sub>2</sub> h11	l <sub>1</sub> +0.20 0	z mm	m h13	Kg/pieces
PF6	6	17.0	5.7	12.5	0.5	0.80	0.005
PF8	8	20.0	7.6	16.6	0.5	0.90	0.008
PF10	10	25.0	9.6	20.5	0.5	1.10	0.015
PF12	12	30.0	11.5	24.5	1.0	1.10	0.026
PF14	14	35.0	13.4	27.5	1.0	1.10	0.042
PF16	16	39.0	15.2	32.5	1.0	1.10	0.061
PF20	20	48.0	19.0	40.5	1.0	1.30	0.118
PF25	25	60.0	23.9	50.5	1.0	1.30	0.230
PF30	30	65.0	28.6	55.5	1.0	1.60	0.350
PF35	35	84.0	33.4	70.5	1.0	1.60	0.820
PF40	40	104.3	37.5	89.0	2.0	1.85	1.020
PF42	42	104.3	39.5	89.0	2.0	1.85	1.100
PF50	50	117.3	47.0	100.0	2.0	2.15	1.720

材料与表面处理方式：  
1) 低碳钢Q235A；表面防锈油，镀锌或者镀镍处理。  
2) 可选用不锈钢304，不锈钢303，不锈钢316，表面钝化处理。  
3) 可选用铝6061，表面清洗；或者阳极氧化。  
4) 可选用中碳钢45；表面防锈油，镀锌或者镀镍处理。

Material and surface treatments:  
1) Low carbon steel Q235A; Coated with rust-proof oil, zinc plating or nickel plating.  
2) Alternative stainless steel 304, stainless steel 303, stainless steel 316; Surface passivation.  
3) Alternative aluminum 6061; Surface cleaning, or anodizing finish.  
4) Alternative medium carbon steel 45; Coated with rust-proof oil, zinc plating or nickel plating.



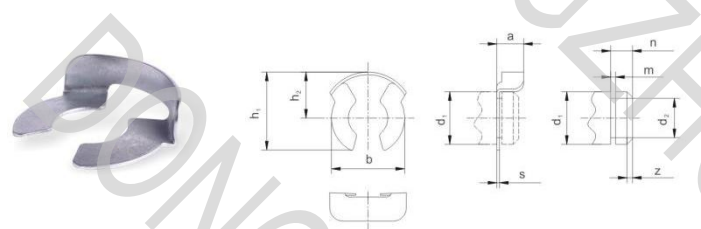


型号 Part No.	尺寸 mm Dimensions			重量KG Weight	型号 Part No.	尺寸 mm Dimensions				
	d	D	B	≈Kg/1000 pcs		d	a	c	f	L
PC-R4	4.3	7.5	0.8	0.15	PC-C4/5	1.5	1.0	2.5	1.5	10
PC-R5	5.3	9.5	1.0	0.39	PC-C6	3.6	1.6	4.0	2.5	10
PC-R6	6.4	11.0	1.6	0.70	PC-C8	5.8	2.0	6.4	3.2	16
PC-R8	8.4	15.0	1.6	1.52	PC-C10	7.4	3.2	8.0	4.0	20
PC-R10	10.5	18.0	2.1	2.11	PC-C12/16	7.4	4.0	8.0	4.0	32
PC-R12	13.0	20.0	2.0	2.85	PC-C20/25	9.2	4.0	10.0	4.0	32
PC-R14	15.0	24.0	2.0	4.30						
PC-R16	17.0	27.0	2.0	5.42						
PC-R20	21.0	33.0	2.5	9.98						
PC-R25	25.0	39.0	4.0	14.50						

材料与表面处理方式:  
1) 低碳钢Q235A; 表面上的防锈油, 镀锌或者镍镀处理.  
2) 可选用不锈钢304; 表面钝化处理.

Material and surface treatments:  
1) Low carbon steel Q235A. Coated with rust-proof oil, zinc plating or nickel plating.  
2) Alternative stainless steel 304; Surface passivation.

U形叉及相配套的卡, 销 Clevises, Clips and Pins

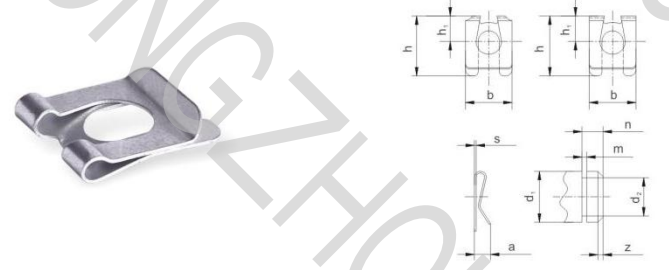
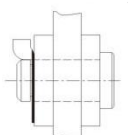


型号 Part No.	Nom. Size	Retainer	Max axial thrust ca.N	重量KG Weight	Bolts
		d <sub>1</sub> ≈b ≈h <sub>1</sub> ≈h <sub>2</sub> a s		100 pcs	d <sub>1</sub> d <sub>2</sub> m n z
PM-K3	3	4.3 5.0 3.0 2.0 0.4	1050	0.0049	3 2.3 0.64 1.5 0.50
PM-K4	4	6.5 7.0 4.3 2.7 0.4	1500	0.0109	4 3.2 0.64 2.0 0.50
PM-K5	5	7.5 8.7 5.2 2.8 0.5	3000	0.0195	5 4.0 0.74 2.5 0.50
PM-K6	6	10.4 11.5 6.8 3.5 0.5	4850	0.0332	6 5.0 0.74 3.0 0.75
PM-K8	8	11.5 12.1 7.2 4.1 0.5	5500	0.0408	8 6.0 0.94 3.5 1.00
PM-K10	10	15.6 16.3 9.5 5.9 0.6	9500	0.0899	10 8.0 1.05 4.5 1.00
PM-K12	12	16.7 18.0 10.5 6.1 0.6	10700	0.1102	12 9.0 1.15 5.0 1.25
PM-K14	14	19.0 20.0 11.5 6.5 0.7	12700	0.1578	14 10.0 1.25 5.5 1.50
PM-K16	16	22.7 23.5 13.8 7.8 0.8	14000	0.2282	16 12.0 1.35 6.0 1.50
PM-K20-25	24	34.5 34.0 20.0 9.0 1.0	—	0.6171	20-25 16-18 1.80 8.0 1.50

材料: 弹簧钢.  
表面处理方式: 防锈油, 镀锌或者镍镀处理.

Material: Spring steel.  
Surface treatment: Coated with rust-proof oil, zinc plating or nickel plating.

-装配图Example of application:

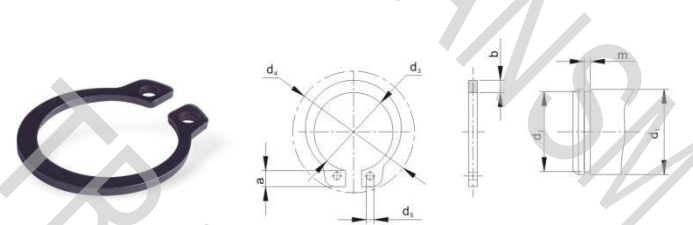


型号 Part No.	Nom. Size	Retainer	Max axial thrust ca.N	重量KG Weight	Bolts
		d <sub>1</sub> b h h <sub>1</sub> a ≈ s		100 pcs	d <sub>1</sub> d <sub>2</sub> m n z
PM-S4	4	7 8.5 4.0 2.3 0.3	1000	0.019	4 3.2 0.64 2.0 0.50
PM-S5	5	9 10.7 5.0 3.3 0.4	1300	0.034	5 4.0 0.74 2.5 0.50
PM-S6	6	11 14.1 6.0 3.8 0.4	1500	0.063	6 5.0 0.74 3.0 0.75
PM-S8	8	14 17.5 8.0 4.0 0.5	3600	0.109	8 6.0 0.94 3.5 1.00
PM-S10	10	18 22.1 10.0 5.0 0.5	6400	0.211	10 8.0 1.05 4.5 1.00
PM-S12	12	22 26.0 12.0 5.0 0.5	9600	0.280	12 9.0 1.15 5.0 1.25
PM-S14	14	25 30.0 13.5 6.0 0.6	11320	0.474	14 10.0 1.25 5.5 1.50
PM-S16	16	28 34.0 16.0 6.0 0.6	13500	0.563	16 12.0 1.35 6.0 1.50

材料: 弹簧钢.  
表面处理方式: 防锈油, 镀锌或者镍镀处理.

Material: Spring steel.  
Surface treatment: Coated with rust-proof oil, zinc plating or nickel plating.

U形叉及相配套的卡, 销 Clevises, Clips and Pins

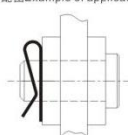


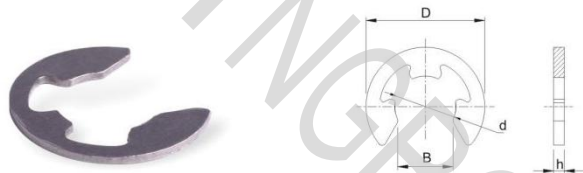
型号 Part No.	尺寸 mm Dimensions						重量KG Weight
	d <sub>1</sub> h <sub>11</sub>	s h <sub>11</sub>	d <sub>2</sub>	d <sub>3</sub>	d <sub>4</sub> min	a max	Kg/100pieces
PM-E6	6	0.7	5.6	11.7	1.15	2.70	1.3 0.084
PM-E8	8	0.8	7.4	14.7	1.20	3.20	1.5 0.158
PM-E10	10	1.0	9.3	17.0	1.50	3.30	1.8 0.340
PM-E12	12	1.0	11.0	19.6	1.70	3.30	1.8 0.500
PM-E14	14	1.0	12.9	21.4	1.70	3.50	2.1 0.640
PM-E16	16	1.0	14.7	23.8	1.70	3.70	2.2 0.700
PM-E20	20	1.2	18.5	28.4	2.00	4.00	2.6 1.300
PM-E25	25	1.2	23.2	34.2	2.00	4.40	3.0 1.900
PM-E30	30	1.5	27.0	40.5	2.00	5.00	3.5 3.320
PM-E35	35	1.5	32.2	46.8	2.50	5.60	3.9 4.000
PM-E40	40	1.8	36.5	52.6	2.50	6.00	4.4 6.030
PM-E42	42	1.8	38.5	55.7	2.50	6.50	4.5 6.500
PM-E50	50	2.0	45.8	64.5	2.50	6.90	5.1 10.200

材料与表面处理方式:  
1) 弹簧钢, 表面发黑处理.  
2) 可选用不锈钢304; 表面钝化处理.

Material and surface treatments:  
1) Spring steel; Black coating.  
2) Alternative stainless steel 304; Surface passivation.

-装配图Example of application:





U形叉及相配套的卡、销 Clevises, Clips and Pins

1. Part No.: FK model - ASSY/01  
For example: FK6×12-ASSY/01



2. Part No.: FK model / FT mode - ASSY/02  
For example: FK6×12-ASSY/02, FT6×12-ASSY/02  
Material: Low carbon steel / stainless steel are optional



3. Part No.: FK model / FT mode - ASSY/03  
For example: FK6×12-ASSY/03, FT6×12-ASSY/03



-20-

-21-

材料与表面处理方式:  
1) 弹簧钢, 表面发黑处理。  
2) 可选用不锈钢304, 表面钝化处理。

Material and surface treatments:  
1) Spring steel, black coating.  
2) Alternative stainless steel 304; Surface passivation.

4. Part No.: FK model / FT mode - ASSY/04  
For example: FK6×12-ASSY/04, FT6×12-ASSY/04



U形叉及相配套的卡、销 Clevises, Clips and Pins

5. Part No.: FK model / FT mode - ASSY/05  
For example: FK6×12-ASSY/05, FT6×12-ASSY/05  
Material: Low carbon steel / stainless steel are optional



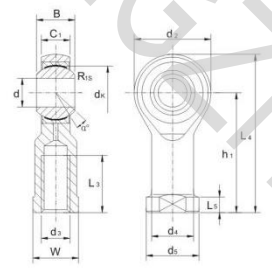
6. Part No.: FK model / FT mode - ASSY/06  
For example: FK6×12-ASSY/06, FT6×12-ASSY/06  
Material: Low carbon steel / stainless steel are optional



-22-



杆端关节轴承SI..T/K  
Rod Ends SI..T/K  
Maintenance-free



杆端关节轴承  
Rod Ends

型号 Part No.	尺寸 mm Dimensions										负荷KN Load ratings		重量KG Weight				
	d	d <sub>SH</sub>	B	C <sub>1</sub>	W	h <sub>1</sub>	d <sub>1</sub>	L <sub>1</sub>	L <sub>2</sub>	d <sub>2</sub>	d <sub>3</sub>	d <sub>4</sub>	L <sub>3</sub>	Q <sub>d</sub>	动dyn. C <sub>d</sub>	静stat. C <sub>s</sub>	Kg-
SI 5 T/K	5	M5×0.8	8	6	9	27	18	36	4	8.5	11	11.11	10	13	5.70	6.00	0.016
SI 6 T/K	6	M6×1.0	9	6.75	11	30	20	40	5	10	13	12.70	12	13	7.20	7.65	0.022
SI 8 T/K	8	M8×1.25	12	9	14	36	24	48	5	12.5	16	15.875	16	14	11.6	12.9	0.047
SI 10 T/K	10	M10×1.5	14	10.5	17	43	28	57	6.5	15	19	19.05	20	13	14.5	18.0	0.077
SI 10 T/KFG	10	M10×1.25	14	10.5	17	43	28	57	6.5	15	19	19.05	20	13	14.5	18.0	0.077
SI 12 T/K	12	M12×1.75	16	12	19	50	32	66	6.5	17.5	22	22.225	22	13	17.0	24.0	0.100
SI 12 T/KFG	12	M12×1.25	16	12	19	50	32	66	6.5	17.5	22	22.225	22	13	17.0	24.0	0.100
SI 14 T/K	14	M14×2.0	19	13.5	22	57	36	75	8	20	25	25.40	25	16	24.0	31.0	0.160
SI 14 T/KFG	14	M14×1.5	19	13.5	22	57	36	75	8	20	25	25.40	25	16	24.0	31.0	0.160
SI 16 T/K	16	M16×2.0	21	15	22	64	42	85	8	22	27	28.575	28	15	28.5	39.0	0.220
SI 16 T/KFG	16	M16×1.5	21	15	22	64	42	85	8	22	27	28.575	28	15	28.5	39.0	0.220
SI 18 T/K	18	M18×2.5	23	16.5	27	71	44	93	10	25	31	31.75	32	15	42.5	47.5	0.320
SI 18 T/KFG	18	M18×1.5	23	16.5	27	71	44	93	10	25	31	31.75	32	15	42.5	47.5	0.320
SI 20 T/K	20	M20×2.5	25	18	30	77	50	102	10	27.5	34	34.925	33	14	42.5	57.0	0.420
SI 20 T/KFG	20	M20×1.5	25	18	30	77	50	102	10	27.5	34	34.925	33	14	42.5	57.0	0.420
SI 22 T/KFG	22	M22×1.5	28	20	32	84	54	111	12	30	38	38.10	37	15	57.0	68.0	0.540
SI 25 T/KFG	25	M24×2.0	31	22	36	94	60	124	12	33.5	42	42.85	42	15	68.0	85.0	0.720
SI 28 T/KFG	28	M27×2.0	35	24	41	103	66	136	14	37	46	47.60	51	15	86.0	107.0	0.820
SI 30 T/KFG	30	M30×2.0	37	25	41	110	70	145	15	40	50	50.80	51	17	88.0	114.0	1.100
SI 35 T/KFG	35	M36×2.0	43	28	50	125	81	165.5	17	46	58	57.10	58	16	-	-	1.600
SI 40 T/KFG	40	M42×2.0	49	33	55	142	91	187.5	19	53	65	66.60	62	17	-	-	2.400
SI 50 T/KFG	50	M48×2.0	60	45	65	160	117	218.5	23	65	75	82.50	67	12	-	-	5.000
SI30..T/KFG 30	M27×2.0	37	25	41	110	70	145	15	40	50	50.80	51	17	88.0	114.0	1.100	

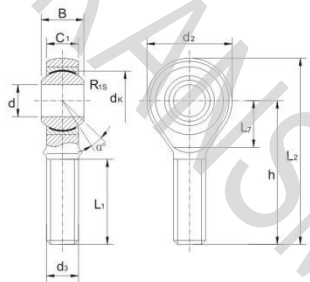
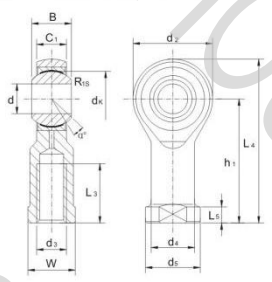
材料表面处理方法：  
-杆体：中碳钢45，表面镀锌处理；钢球：轴承钢GCr15，不电镀；内圈为黄铜H62，带PTFE。  
-杆体：可选用不锈钢304，不锈钢316，表面钝化处理；钢球：可选用轴承钢GCr15镀铬或者用440C不锈钢，内圈：可选用低碳钢20或者不锈钢304。  
-For left-hand thread, please add suffix "L", e.g. SI 8 T/K.  
-For fine-pitch thread, please add suffix "FG", e.g. SI 8 T/KFG.  
-General with forging part, also turn part is optional.

Material and surface treatments:  
-Body: medium carbon steel 45, zinc plating; Steel ball: bearing steel GCr15 without chromium plating; Inner ring: brass H62, with PTFE.  
-Body: stainless steel 304, stainless steel 316 is optional with surface passivation.  
Steel ball: alternative bearing steel GCr15 with hard chrome plating or stainless steel 440C; Inner ring: alternative low carbon steel 20 or stainless steel 304.

-25-

杆端关节轴承SI..T/K  
Rod Ends SI..T/K  
Maintenance-free

杆端关节轴承SA..T/K  
Rod Ends SA..T/K  
Maintenance-free



型号 Part No.	尺寸 mm Dimensions										负荷KN Load ratings		重量KG Weight				
	d	d <sub>SH</sub>	B	C <sub>1</sub>	W	h <sub>1</sub>	d <sub>1</sub>	L <sub>1</sub>	L <sub>2</sub>	d <sub>2</sub>	d <sub>3</sub>	d <sub>4</sub>	L <sub>3</sub>	Q <sub>d</sub>	动dyn. C <sub>d</sub>	静stat. C <sub>s</sub>	Kg-
SI 5 T/K	5	M5×0.8	8	6	9	27	18	36	4	8.5	11	11.11	10	13	5.70	6.00	0.016
SI 6 T/K	6	M6×1.0	9	6.75	11	30	20	40	5	10	13	12.70	12	13	7.20	7.65	0.022
SI 8 T/K	8	M8×1.25	12	9	14	36	24	48	5	12.5	16	15.875	16	14	11.6	12.9	0.047
SI 10 T/K	10	M10×1.5	14	10.5	17	43	28	57	6.5	15	19	19.05	20	13	14.5	18.0	0.077
SI 10 T/KFG	10	M10×1.25	14	10.5	17	43	28	57	6.5	15	19	19.05	20	13	14.5	18.0	0.077
SI 12 T/K	12	M12×1.75	16	12	19	50	32	66	6.5	17.5	22	22.225	22	13	17.0	24.0	0.100
SI 12 T/KFG	12	M12×1.25	16	12	19	50	32	66	6.5	17.5	22	22.225	22	13	17.0	24.0	0.100
SI 14 T/K	14	M14×2.0	19	13.5	22	57	36	75	8	20	25	25.40	25	16	24.0	31.0	0.160
SI 14 T/KFG	14	M14×1.5	19	13.5	22	57	36	75	8	20	25	25.40	25	16	24.0	31.0	0.160
SI 16 T/K	16	M16×2.0	21	15	22	64	42	85	8	22	27	28.575	28	15	28.5	39.0	0.220
SI 16 T/KFG	16	M16×1.5	21	15	22	64	42	85	8	22	27	28.575	28	15	28.5	39.0	0.220
SI 18 T/K	18	M18×2.5	23	16.5	27	71	44	93	10	25	31	31.75	32	15	42.5	47.5	0.320
SI 18 T/KFG	18	M18×1.5	23	16.5	27	71	44	93	10	25	31	31.75	32	15	42.5	47.5	0.320
SI 20 T/K	20	M20×2.5	25	18	30	77	50	102	10	27.5	34	34.925	33	14	42.5	57.0	0.420
SI 20 T/KFG	20	M20×1.5	25	18	30	77	50	102	10	27.5	34	34.925	33	14	42.5	57.0	0.420
SI 22 T/KFG	22	M22×1.5	28	20	32	84	54	111	12	30	38	38.10	37	15	57.0	68.0	0.540
SI 25 T/KFG	25	M24×2.0	31	22	36	94	60	124	12	33.5	42	42.85	42	15	68.0	85.0	0.720
SI 28 T/KFG	28	M27×2.0	35	24	41	103	66	136	14	37	46	47.60	51	15	86.0	107.0	0.820
SI 30 T/KFG	30	M30×2.0	37	25	41	110	70	145	15	40	50	50.80	51	17	88.0	114.0	1.100
SI 35 T/KFG	35	M36×2.0	43	28	50	125	81	165.5	17	46	58	57.10	58	16	-	-	1.600
SI 40 T/KFG	40	M42×2.0	49	33	55	142	91	187.5	19	53	65	66.60	62	17	-	-	2.400
SI 50 T/KFG	50	M48×2.0	60	45	65	160	117	218.5	23	65	75	82.50	67	12	-	-	5.000

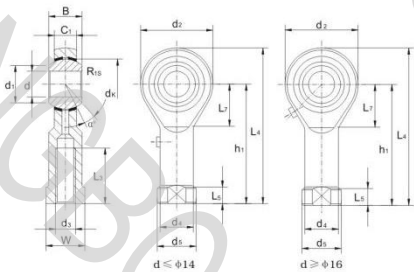
材料表面处理方法：  
-杆体：中碳钢45，表面镀锌处理；钢球：轴承钢GCr15，不电镀；内圈为黄铜H62，带PTFE。  
-杆体：可选用不锈钢304，不锈钢316，表面钝化处理；钢球：可选用轴承钢GCr15镀铬或者用440C不锈钢，内圈：可选用低碳钢20或者不锈钢304。  
-For left-hand thread, please add suffix "L", e.g. SI 8 T/K.  
-For fine-pitch thread, please add suffix "FG", e.g. SI 8 T/KFG.  
-General with forging part, also turn part is optional.

Material and surface treatments:  
-Body: medium carbon steel 45, zinc plating; Steel ball: bearing steel GCr15 without chromium plating; Inner ring: copper H62, with PTFE.  
-Body: stainless steel 304, stainless steel 316 is optional with surface passivation.  
Steel ball: alternative bearing steel GCr15 with hard chrome plating or stainless steel 440C; Inner ring: alternative low carbon steel 20 or stainless steel 304.

型号 Part No.	尺寸 mm Dimensions										负荷KN Load ratings		重量KG Weight				
	d	d <sub>SH</sub>	B	C <sub>1</sub>	W	h <sub>1</sub>	d <sub>1</sub>	L <sub>1</sub>	L <sub>2</sub>	d <sub>2</sub>	d <sub>3</sub>	d <sub>4</sub>	L <sub>3</sub>	Q <sub>d</sub>	动dyn. C <sub>d</sub>	静stat. C <sub>s</sub>	Kg-
SA 5 T/K	5	M5×0.8	8	6	9	19	18	33	42	11.11	0.3	13	5.70	6.00	0.013		
SA 6 T/K	6	M6×1.0	9	6.75	11	21	20	36	46	12.70	0.3	13	7.20	7.65	0.020		
SA 8 T/K	8	M8×1.25	12	9	14	25	24	42	54	15.875	0.3	14	11.6	12.9	0.038		
SA 10 T/K	10	M10×1.5	14	10.5	17	28	28	48	62	19.05	0.3	13	14.5	18.0	0.055		
SA 12 T/K	12	M12×1.75	16	12	19	32	32	54	70	22.225	0.3	13	17.0	24.0	0.085		
SA 14 T/K	14	M14×2.0	19	13.5	22	36	36	60	78	25.40	0.3	16	24.0	31.0	0.14		
SA 16 T/K	16	M16×2.0	21	15	22	42	42	66	87	28.575	0.3	15	28.5	39.0	0.21		
SA 18 T/K	18	M18×2.5	23	16.5	27	44	44	66	87	31.75	0.3	15	42.5	47.5	0.28		
SA 20 T/K	20	M20×2.5	25	18	30	48	48	72	94	34.925	0.3	14	42.5	57.0	0.38		
SA 22 T/KFG	22	M22×1.5	28	20	32	54	54	81	103	38.10	0.3	15	57.0	68.0	0.48		
SA 25 T/KFG	25	M24×2.0	31	22	36	60	60	90	124	42.85	0.3	15	68.0	85.0	0.64		
SA 28 T/KFG	28	M27×2.0	35	24	41	66	66	99	136	47.60	0.3	15	86.0	107.0	0.80		
SA 30 T/KFG	30	M30×2.0	37	25	41	70	70	105	140	50.80	0.3	17	88.0	114.0	1.10		
SA 35 T/KFG	35	M36×2.0	43	28	50	81	81	121	160	57.10	0.3	16	-	-	1.64		
SA 40 T/KFG	40	M42×2.0	49	33	55	91	91	136	180	66.60	0.3	17	-	-	2.30		
SA 50 T/KFG	50	M48×2.0	60	45	65	105	105	157.5	210	82.50							



Rod Ends PHS Maintenance required

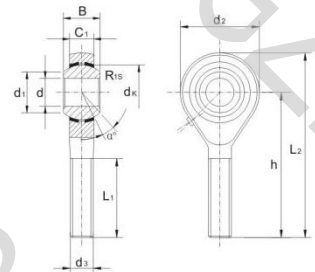


型号 Part No.	尺寸 mm Dimensions															负荷KN Load ratings	重量KG Weight		
	d	d <sub>gh</sub>	B	C <sub>1</sub>	W	L <sub>1</sub>	d <sub>2</sub>	L <sub>2</sub>	L <sub>3</sub>	d <sub>4</sub>	d <sub>5</sub>	d <sub>6</sub>	d <sub>7</sub>	d <sub>8</sub>	d <sub>9</sub>	Q	动dyn. C <sub>d</sub>	静stat. C <sub>s</sub>	K <sub>g</sub>
PHS 5	5	M5×0.8	8	6	9	10	16	35	27	4	8.5	11	11.11	7.70	13	3.25	5.70	0.016	
PHS 6	6	M6×1.0	9	6.75	11	12	18	39	30	5	10.0	13	12.70	8.95	13	4.30	7.20	0.022	
PHS 8	8	M8×1.25	12	9	14	16	22	47	36	5	12.5	16	15.875	10.4	14	7.20	11.6	0.047	
PHS 10	10	M10×1.5	14	10.5	17	20	26	56	43	6.5	15.0	19	19.05	12.9	13	10.0	14.5	0.077	
PHS 10FG	10	M10×1.25	14	10.5	17	20	26	56	43	6.5	15.0	19	19.05	12.9	13	10.0	14.5	0.077	
PHS 12	12	M12×1.75	16	12	19	22	30	65	50	6.5	17.5	22	22.225	15.4	13	13.4	17.0	0.10	
PHS 12FG	12	M12×1.25	16	12	19	22	30	65	50	6.5	17.5	22	22.225	15.4	13	13.4	17.0	0.10	
PHS 14	14	M14×2.0	19	13.5	22	25	34	74	57	8	20.0	25	25.40	16.9	16	17.0	24.0	0.16	
PHS 14FG	14	M14×1.5	19	13.5	22	25	34	74	57	8	20.0	25	25.40	16.9	16	17.0	24.0	0.16	
PHS 16	16	M16×2.0	21	15	24	28	40	84	64	8	22.0	27	28.575	19.4	15	21.6	28.5	0.22	
PHS 16FG	16	M16×1.5	21	15	24	28	40	84	64	8	22.0	27	28.575	19.4	15	21.6	28.5	0.22	
PHS 18	18	M18×2.5	23	16.5	27	32	44	93	71	10	25.0	31	31.75	21.9	15	26.0	42.5	0.32	
PHS 18FG	18	M18×1.5	23	16.5	27	32	44	93	71	10	25.0	31	31.75	21.9	15	26.0	42.5	0.32	
PHS 20	20	M20×2.5	25	18	30	33	50	102	77	10	27.5	34	34.925	24.4	14	31.5	42.5	0.42	
PHS 20FG	20	M20×1.5	25	18	30	33	50	102	77	10	27.5	34	34.925	24.4	14	31.5	42.5	0.42	
PHS 22FG	22	M22×1.5	28	20	32	37	54	111	84	12	30.0	38	38.10	25.8	15	38.0	57.0	0.54	
PHS 25FG	25	M24×2.0	31	22	36	42	60	124	94	12	33.5	42	42.85	29.6	15	47.5	68.0	0.73	
PHS 28FG	28	M27×2.0	35	24	41	48	66	136	103	14	37.0	46	47.60	32.3	15	58.0	75.0	0.98	
PHS 30FG	30	M30×2.0	37	25	41	51	70	145	110	15	40.0	50	50.80	34.8	17	64.0	88.0	1.10	

-外圈球面镶有黄铜衬套  
 -杆体有润滑油孔或油杯  
 -若是左旋螺纹，则在型号后面，数字前加“L”，e.g. PHS L 8  
 -若是细牙螺纹，则在型号后面加FG，如PHS 8FG  
 -产品默认镀锌，可选用零件。  
 材料和表面处理方式：  
 -杆体：中碳钢45，表面镀锌处理；球体：轴承钢GCr15，不电镀；内圈为黄铜H62。  
 -杆体：可选用不锈钢304，不锈钢316，表面转化处理；球体：可选用轴承钢GCr15硬铬或者用440C不锈钢；内圈：可选用低碳钢20或者304不锈钢。  
 - Outer race is lined with brass liner.  
 - Rod body with a lubricating hole or grease nipple.  
 - For left-hand thread, please add suffix "L", e.g. PHS L 8  
 - For fine-pitch thread, please add suffix "FG", e.g. PHS 8FG  
 - General with forging part, also turn part is optional.

Material and surface treatments:  
 -Body: medium carbon steel 45, zinc plating; Steel ball: bearing steel GCr15 without chromium plating; Inner ring: copper H62.  
 -Body: stainless steel 304, stainless steel 316 is optional with surface passivation.  
 Steel ball: alternative bearing steel GCr15 with hard chrome plating or stainless steel 440C; Inner ring: alternative low carbon steel 20 or stainless steel 304.

Rod Ends POS Maintenance required



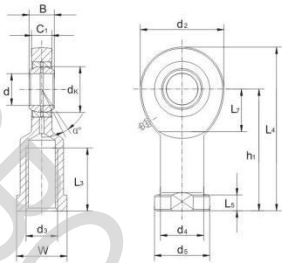
型号 Part No.	尺寸 mm Dimensions															负荷KN Load ratings	重量KG Weight
	d	d <sub>gh</sub>	B	C <sub>1</sub>	L <sub>1</sub>	d <sub>2</sub>	h	L <sub>2</sub>	d <sub>3</sub>	R <sub>1</sub>	d <sub>4</sub>	Q	动dyn. C <sub>d</sub>	静stat. C <sub>s</sub>	K <sub>g</sub>		
POS 5	5	M5×0.8	8	6	20	16	33	41	11.11	0.3	7.70	13	3.25	5.70	0.013		
POS 6	6	M6×1.0	9	6.75	22	18	36	45	12.70	0.3	8.96	13	4.30	7.20	0.020		
POS 8	8	M8×1.25	12	9	25	22	42	53	15.875	0.3	10.4	14	7.20	11.6	0.030		
POS 10	10	M10×1.5	14	10.5	29	26	48	61	19.05	0.3	12.9	13	10.0	14.5	0.055		
POS 12	12	M12×1.75	16	12	33	30	54	69	22.225	0.3	15.4	13	13.4	17.0	0.085		
POS 14	14	M14×2.0	19	13.5	36	34	60	77	25.40	0.3	16.9	16	17.0	24.0	0.14		
POS 16	16	M16×2.0	21	15	40	40	66	86	28.575	0.3	19.4	15	21.6	28.5	0.21		
POS 18	18	M18×2.5	23	16.5	44	44	72	94	31.75	0.3	21.9	15	26.0	42.5	0.28		
POS 18FG	18	M18×1.5	23	16.5	44	44	72	94	31.75	0.3	21.9	15	26.0	42.5	0.28		
POS 20	20	M20×2.5	25	18	47	50	78	103	34.925	0.3	24.4	14	31.5	52.5	0.38		
POS 20FG	20	M20×1.5	25	18	47	50	78	103	34.925	0.3	24.4	14	31.5	52.5	0.38		
POS 22FG	22	M22×1.5	28	20	51	54	84	111	38.10	0.3	25.8	16	38.0	57.0	0.48		
POS 25FG	25	M24×2.0	31	22	57	60	94	124	42.85	0.3	29.6	15	47.5	68.0	0.64		
POS 28FG	28	M27×2.0	35	24	62	66	103	136	47.60	0.3	32.3	15	58.0	75.0	0.96		
POS 30FG	30	M30×2.0	37	25	66	70	110	145	50.80	0.3	34.8	17	64.0	88.0	1.10		

-外圈球面镶有黄铜衬套  
 -杆体有润滑油孔或油杯  
 -若是左旋螺纹，则在型号后面，数字前加“L”，e.g. POS L 8  
 -若是细牙螺纹，则在型号后面加FG，如POS 8FG  
 -产品默认镀锌，可选用零件。  
 材料和表面处理方式：  
 -杆体：中碳钢45，表面镀锌处理；球体：轴承钢GCr15，不电镀；内圈为黄铜H62。  
 -杆体：可选用不锈钢304，不锈钢316，表面转化处理；球体：可选用轴承钢GCr15硬铬或者用440C不锈钢；内圈：可选用低碳钢20或者304不锈钢。  
 - Outer race is lined with brass liner.  
 - Rod body with a lubricating hole or grease nipple.  
 - For left-hand thread, please add suffix "L", e.g. POS L 8  
 - For fine-pitch thread, please add suffix "FG", e.g. POS 8FG  
 - General with forging part, also turn part is optional.

Material and surface treatments:  
 -Body: medium carbon steel 45, zinc plating; Steel ball: bearing steel GCr15 without chromium plating; Inner ring: brass H62.  
 -Body: stainless steel 304, stainless steel 316 is optional with surface passivation.  
 Steel ball: alternative bearing steel GCr15 with hard chrome plating or stainless steel 440C; Inner ring: alternative low carbon steel 20 or stainless steel 304.



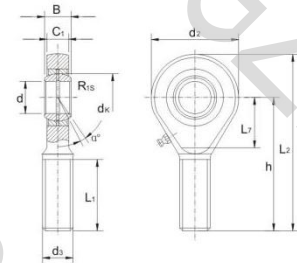
**杆端关节轴承SI..E(S), SI..ES 2RS** DONGZHOU COMPANY  
Rod Ends SI..E(S), SI..ES 2RS  
Maintenance required



型号 Part No.	尺寸 mm Dimensions														负荷KN Load ratings	重量KG Weight	
d	d <sub>1</sub>	B	C <sub>1</sub>	L <sub>1</sub>	W	d <sub>2</sub>	h <sub>1</sub>	L <sub>2</sub>	L <sub>3</sub>	d <sub>4</sub>	d <sub>5</sub>	d <sub>6</sub>	Q	动荷 C <sub>d</sub>	静荷 C <sub>s</sub>	Kg	
SI 6 E*	6	M6×1.0	6	4.4	11	11	21	30	40.5	5	10	13	10	13	3.40	8.15	0.021
SI 8 E*	8	M8×1.25	8	6.0	15	14	24	36	48	5	12.5	16	13	15	5.50	12.9	0.039
SI 10 E*	10	M10×1.5	9	7.0	20	17	29	43	57.5	6.5	15	19	16	12	8.15	17.6	0.061
SI 12 E*	12	M12×1.75	10	8.0	23	19	34	50	67	6.5	17.5	22	18	11	10.8	24.5	0.086
SI 15 ES	15	M14×2.0	12	10	30	22	40	61	81	8	21	26	22	8	17.0	36.0	0.180
SI 17 ES	17	M16×2.0	14	11	34	27	46	67	90	10	24	30	25	10	21.2	45.0	0.220
SI 20 ES	20	M20×2.5	16	13	40	32	53	77	103.5	10	27.5	35	29	9	30.0	60.0	0.350
SI 25 ES	25	M24×3.0	20	17	48	36	64	94	126	12	33.5	42	35.5	7	48.0	83.0	0.640
SI 30 ES	30	M30×3.0	22	19	56	41	73	110	146.5	15	40	50	40.7	6	62.0	110	0.930
SI 35 ES	35	M36×3.0	25	21	60	50	82	125	166	15	47	58	47	6	80.0	146	1.30
SI 40 ES	40	M39×3.0	28	23	65	55	92	142	188	18	52	65	53	7	100	180	2.00
SI 45 ES	45	M42×3.0	32	27	65	60	102	145	196	20	58	70	60	7	127	240	2.50
SI 50 ES	50	M45×3.0	35	30	68	65	112	160	216	20	62	75	66	6	156	290	3.50
SI 60 ES	60	M52×3.0	44	38	70	75	135	175	242.5	20	70	88	80	6	245	450	5.50
SI 70 ES	70	M56×4.0	49	42	80	85	160	200	280	20	80	98	92	6	315	610	8.60
SI 80 ES	80	M64×4.0	55	47	85	100	180	230	320	25	95	110	105	6	400	750	12.0

- 由杆端体和自润滑离心关节轴承GE..E(S)或者GE..ES 2RS组成。  
- SI..E(S)型杆端体有润滑油孔或者油杯。  
- 轴承孔径d15, 可制造-2RS结构, 例如: SI 20 ES 2RS。  
- 带“\*”的型号均不配油孔或者油杯。  
- 若是左旋螺纹, 则在型号后面, 数字前面加L, 如SI L 20ES。  
- 产品默认为锻件。  
- 杆端体: 中碳钢45, 表面镀锌处理; 内圈和钢球: 轴承钢GCr15。  
- It is made up of a radial spherical plain bearing GE..E(S) or GE..ES 2RS and rod body.  
- Rod body of SI..E(S) with a lubricating hole or a grease nipple.  
- For bearings d≥15, SI..ES 2RS also available, e.g. SI 20 ES 2RS.  
- Lubricating hole or grease nipple isn't available for the sizes marked "\*"。  
- For left-hand thread, please add suffix "L", e.g. SI L 20ES.  
- All with forging part.  
- Body: medium carbon steel 45, zinc plating; Inner ring and steel ball: both bearing steel GCr15.

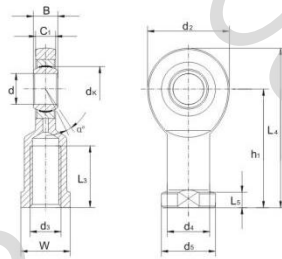
**杆端关节轴承SA..E(S), SA..ES 2RS** DONGZHOU COMPANY  
Rod Ends SA..E(S), SA..ES 2RS  
Maintenance required



型号 Part No.	尺寸 mm Dimensions														负荷KN Load ratings	重量KG Weight
d	d <sub>1</sub>	B	C <sub>1</sub>	L <sub>1</sub>	W	d <sub>2</sub>	h <sub>1</sub>	L <sub>2</sub>	L <sub>3</sub>	d <sub>4</sub>	d <sub>5</sub>	d <sub>6</sub>	Q	动荷 C <sub>d</sub>	静荷 C <sub>s</sub>	Kg
SA 6 E*	6	M6×1.0	6	4.4	18	21	11	36	46.5	10	0.3	13	3.40	8.15	0.017	
SA 8 E*	8	M8×1.25	8	6	22	24	14	42	54	13	0.3	15	5.50	12.9	0.029	
SA 10 E*	10	M10×1.5	9	7	26	29	15	48	62.5	16	0.3	12	8.15	17.6	0.051	
SA 12 E*	12	M12×1.75	10	8	28	34	17	54	71	18	0.3	11	10.8	24.5	0.086	
SA 15 ES	15	M14×2.0	12	10	34	40	20	63	83	22	0.3	8	17.0	36.0	0.140	
SA 17 ES	17	M16×2.0	14	11	36	46	23	69	92	25	0.3	10	21.2	45.0	0.190	
SA 20 ES	20	M20×2.5	16	13	43	53	27	78	104.5	29	0.6	9	30.0	60.0	0.310	
SA 25 ES	25	M24×3.0	20	17	53	64	32	94	126	35.5	0.6	7	48.0	83.0	0.560	
SA 30 ES	30	M30×3.0	22	19	65	73	37	110	146.5	40.7	0.6	6	62.0	110	0.890	
SA 35 ES	35	M36×3.0	25	21	82	82	41	140	181	47	0.6	6	80.0	146	1.40	
SA 40 ES	40	M39×3.0	28	23	86	92	46	150	196	53	0.6	7	100	180	2.00	
SA 45 ES	45	M42×3.0	32	27	94	102	51	163	214	60	0.6	7	127	240	2.60	
SA 50 ES	50	M45×3.0	35	30	107	112	56	185	241	66	0.6	6	156	290	3.40	
SA 60 ES	60	M52×3.0	44	38	115	135	68	210	277.5	80	1.0	6	245	450	5.90	
SA 70 ES	70	M56×4.0	49	42	125	160	80	235	315	92	1.0	6	315	610	8.20	
SA 80 ES	80	M64×4.0	55	47	140	180	90	270	360	105	1.0	6	400	750	12.0	

- 由杆端体和自润滑离心关节轴承GE..E(S)或者GE..ES 2RS组成。  
- SI..E(S)型杆端体有润滑油孔或者油杯。  
- 轴承孔径d15, 可制造-2RS结构, 例如: SA 20 ES 2RS。  
- 带“\*”的型号均不配油孔或者油杯。  
- 若是左旋螺纹, 则在型号后面, 数字前面加L, 如SA L 20ES。  
- 产品默认为锻件。  
- 杆端体: 中碳钢45, 表面镀锌处理; 内圈和钢球: 轴承钢GCr15。  
- It is made up of a radial spherical plain bearing GE..E(S) or GE..ES 2RS and rod body.  
- Rod body of SI..E(S) with a lubricating hole or a grease nipple.  
- For bearings d≥15, SI..ES 2RS also available, e.g. SA 20 ES 2RS.  
- Lubricating hole or grease nipple isn't available for the sizes marked "\*"。  
- For left-hand thread, please add suffix "L", e.g. SA L 20ES.  
- All with forging part.  
- Body: medium carbon steel 45, zinc plating; Inner ring and steel ball: both bearing steel GCr15.

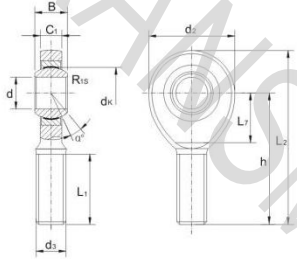
**杆端关节轴承GIR..UK, GIR..UK 2RS** DONGZHOU COMPANY  
Rod Ends GIR..UK, GIR..UK 2RS  
Maintenance-free



型号 Part No.	尺寸 mm Dimensions														负荷KN Load ratings	重量KG Weight	
d	d <sub>1</sub>	B	C <sub>1</sub>	L <sub>1</sub>	W	d <sub>2</sub>	h <sub>1</sub>	L <sub>2</sub>	L <sub>3</sub>	d <sub>4</sub>	d <sub>5</sub>	d <sub>6</sub>	Q	动荷 C <sub>d</sub>	静荷 C <sub>s</sub>	Kg	
GIR 6 UK	6	M6×1.0	6	4.4	21	11	11	10	13	5	30	40.5	10	13	3.60	8.15	0.021
GIR 8 UK	8	M8×1.25	8	6	24	15	14	12.5	16	5	36	48	13	15	5.85	12.9	0.039
GIR 10 UK	10	M10×1.5	9	7	29	20	17	15	19	6.5	43	57.5	16	12	8.65	17.6	0.061
GIR 12 UK	12	M12×1.75	10	8	34	23	19	17.5	22	6.5	50	67	18	11	11.4	24.5	0.086
GIR 15 UK	15	M14×2.0	12	10	40	30	22	21	26	8	61	81	22	8	17.6	36.0	0.18
GIR 17 UK (2RS)	17	M16×2.0	14	11	46	34	27	24	30	10	67	90	25	10	22.4	45.0	0.22
GIR 20 UK (2RS)	20	M20×2.5	16	13	50	40	32	27.5	35	10	77	103.5	29	9	31.5	60.0	0.35
GIR 25 UK (2RS)	25	M24×3.0	20	17	64	48	36	33.5	42	12	94	126	35.5	7	51.0	83.0	0.64
GIR 30 UK (2RS)	30	M30×3.0	22	19	73	56	41	40	50	15	110	146.5	40.7	6	66.5	110	0.93
GIR 35 UK 2RS	35	M36×3.0	25	21	82	60	50	47	58	15	125	166	47	6	112	146	1.30
GIR 40 UK 2RS	40	M39×3.0	28	23	92	65	55	52	65	18	142	188	53	7	140	180	2.00
GIR 45 UK 2RS	45	M42×3.0	32	27	102	65	60	58	70	20	145	196	60	7	180	240	2.50
GIR 50 UK 2RS	50	M45×3.0	35	30	112	68	65	62	75	20	160	216	66	6	220	290	3.50
GIR 60 UK 2RS	60	M52×3.0	44	38	135	70	75	70	88	20	175	242.5	80	6	345	450	5.50
GIR 70 UK 2RS	70	M56×4.0	49	42	160	80	85	80	98	20	200	280	92	6	440	610	8.60
GIR 80 UK 2RS	80	M64×4.0	55	47	180	85	100	95	110	25	230	320	105	6	570	750	12.0

- 由杆端体和自润滑离心关节轴承GE..UK或者GE..UK 2RS组成。  
- 轴承孔径d17, GIR..UK 2RS also available, e.g. GIR 20 UK 2RS。  
- 若是左旋螺纹, 则在型号后面, 数字前面加L, 如GIR L 20UK。  
- 产品默认为锻件。  
- 杆端体: 中碳钢45, 表面镀锌处理; 内圈和钢球: 轴承钢GCr15。  
- It is made up of a maintenance-free radial spherical plain bearing GE..UK or GE..UK 2RS and rod body.  
- For bearings d≥17, GIR..UK 2RS also available, e.g. GIR 20 UK 2RS.  
- For left-hand thread, please add suffix "L", e.g. GIR L 20UK.  
- All with forging part.  
- Body: medium carbon steel 45, zinc plating; Inner ring and steel ball: both bearing steel GCr15.

**杆端关节轴承GAR..UK, GAR..UK 2RS** DONGZHOU COMPANY  
Rod Ends GAR..UK, GAR..UK 2RS  
Maintenance-free

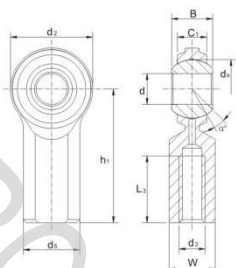


型号 Part No.	尺寸 mm Dimensions														负荷KN Load ratings	重量KG Weight	
d	d <sub>1</sub>	B	C <sub>1</sub>	L <sub>1</sub>	W	d <sub>2</sub>	h <sub>1</sub>	L <sub>2</sub>	L <sub>3</sub>	d <sub>4</sub>	d <sub>5</sub>	d <sub>6</sub>	Q	动荷 C <sub>d</sub>	静荷 C <sub>s</sub>	Kg	
GAR 6 UK	6	M6×1.0	6	4.4	21	11	11	10	13	5	30	40.5	10	13	3.60	8.15	0.017
GAR 8 UK	8	M8×1.25	8	6	24	15	14	12.5	16	5	36	48	13	15	5.85	12.9	0.029
GAR 10 UK	10	M10×1.5	9	7	29	20	17	15	19	6.5	43	57.5	16	12	8.65	17.6	0.051
GAR 12 UK	12	M12×1.75	10	8	34	23	19	17.5	22	6.5	50	67	18	11	11.4	24.5	0.086
GAR 15 UK	15	M14×2.0	12	10	40	30	22	21	26	8	61	81	22	8	17.6	36.0	0.14
GAR 17 UK (2RS)	17	M16×2.0	14	11	46	34	27	24	30	10	67						

杆端关节轴承 CF..S, CF..C

DONGZHOU COMPANY

Rod Ends CF, CF..S, CF..C  
Maintenance required, inch dimensions



型号 Part No.	尺寸 inch Dimensions							负荷KN Load ratings	重量KG Weight				
	d	B	C <sub>1</sub>	h <sub>1</sub>	d <sub>2</sub>	d <sub>3</sub>	W	d <sub>4</sub>	L <sub>3</sub> mm	d <sub>5</sub> 2B	α	Kg <sup>m</sup>	
CF3*	0.1900	0.312	0.234	1.062	0.625	0.406	0.312	0.437	0.600	10-32	10	9.247	0.018
CF4*	0.2500	0.375	0.250	1.312	0.750	0.469	0.375	0.500	0.687	1/4-28	13.5	14.269	0.023
CF5*	0.3125	0.437	0.312	1.375	0.875	0.500	0.437	0.625	0.687	5/16-24	11	17.009	0.036
CF6	0.3750	0.500	0.359	1.625	1.000	0.687	0.562	0.719	0.812	3/8-24	11	22.627	0.059
CF7	0.4375	0.562	0.406	1.812	1.125	0.750	0.625	0.812	0.937	7/16-20	10.5	28.400	0.082
CF8	0.5000	0.625	0.453	2.125	1.312	0.875	0.750	0.937	1.062	1/2-20	10	40.459	0.132
CF10	0.6250	0.750	0.484	2.500	1.500	1.000	0.875	1.125	1.375	5/8-18	13	43.203	0.195
CF12	0.7500	0.875	0.593	2.875	1.750	1.125	1.000	1.312	1.562	3/4-16	12	63.193	0.295

- 杆端体挤压成型
- 带“\*”的型号均不配油孔或油杯, 其余者需配油杯, 请用CF..C的代号。
- 若需装配杆子, 产品型号后加 S, 如CF8S。
- 表中负荷值仅适用于非油杯的情况。
- 若是左旋螺纹, 则在型号后面, 数字前面加 L, 如CF L 8
- 产品默认车件。

材料和表面处理方式:

- 杆端体: 中碳钢45, 表面镀锌; 钢球: 轴承钢, 镀硬铬。
- 杆端体: 可选用不锈钢304, 不锈钢303, 不锈钢316, 表面钝化处理; 钢球: 可用440C不锈钢。

Rod body is pressed around inner ring.

- Lubricating hole or grease nipple isn't available for the sizes marked “\*”. When grease nipple is required for other sizes, please use the sign CF..C.

- If assembling with rod, please add suffix “S”, e.g. CF8S.

- Load ratings only apply to rod ends without grease nipple.

- For left-hand thread, please add suffix “L”, e.g. CF L 8.

- All with turn part.

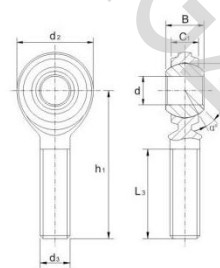
Material and surface treatments:

- Body: medium carbon steel 45, zinc plating; steel ball: bearing steel with hard chrome plating.
- Body: stainless steel 304, stainless steel 303 or stainless steel 316 is optional with surface passivation. Steel ball: alternative stainless steel 440C.

杆端关节轴承 CM..S, CM..C

DONGZHOU COMPANY

Rod Ends CM, CM..S, CM..C  
Maintenance required, inch dimensions



型号 Part No.	尺寸 inch Dimensions							负荷KN Load ratings	重量KG Weight			
	d	B	C <sub>1</sub>	h <sub>1</sub>	d <sub>2</sub>	d <sub>3</sub>	W	d <sub>4</sub>	L <sub>3</sub> mm	d <sub>5</sub> 2A	α	Kg <sup>m</sup>
CM3*	0.1900	0.312	0.234	1.250	0.625	0.437	0.750	10-32	10	5.355	10	0.014
CM4*	0.2500	0.375	0.250	1.562	0.750	0.500	1.000	1/4-28	13.5	9.839	10	0.018
CM5*	0.3125	0.437	0.312	1.875	0.875	0.625	1.250	5/16-24	11	15.910	10	0.032
CM6	0.3750	0.500	0.359	1.938	1.000	0.719	1.250	3/8-24	11	22.542	10	0.050
CM7	0.4375	0.562	0.406	2.125	1.125	0.812	1.375	7/16-20	10.5	28.223	10	0.068
CM8	0.5000	0.625	0.453	2.438	1.312	0.937	1.500	1/2-20	10	37.097	10	0.109
CM10	0.6250	0.75	0.484	2.625	1.500	1.125	1.625	5/8-18	13	43.203	10	0.163
CM12	0.7500	0.875	0.593	2.875	1.750	1.312	1.750	3/4-16	12	63.193	10	0.259

- 杆端体挤压成型
- 带“\*”的型号均不配油孔或油杯, 其余者需配油杯, 请用CM..C的代号。
- 若需装配杆子, 产品型号后加 S, 如CM8S。
- 表中负荷值仅适用于非油杯的情况。
- 若是左旋螺纹, 则在型号后面, 数字前面加 L, 如CM L 8
- 产品默认车件。

材料和表面处理方式:

- 杆端体: 中碳钢45, 表面镀锌; 钢球: 轴承钢, 镀硬铬。
- 杆端体: 可选用不锈钢304, 不锈钢303, 不锈钢316, 表面钝化处理; 钢球: 可用440C不锈钢。

Rod body is pressed around inner ring.

- Lubricating hole or grease nipple isn't available for the sizes marked “\*”. When grease nipple is required for other sizes, please use the sign CM..C.

- If assembling with rod, please add suffix “S”, e.g. CM8S.

- Load ratings only apply to rod ends without grease nipple.

- For left-hand thread, please add suffix “L”, e.g. CM L 8.

- All with turn part.

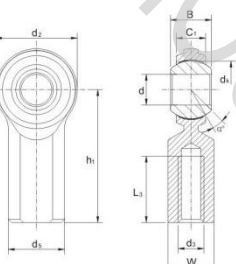
Material and surface treatments:

- Body: medium carbon steel 45, zinc plating; steel ball: bearing steel with hard chrome plating.
- Body: stainless steel 304, stainless steel 303 or stainless steel 316 is optional with surface passivation. Steel ball: alternative stainless steel 440C.

杆端关节轴承 CF..T, CF..TS

DONGZHOU COMPANY

Rod Ends CF..T, CF..TS  
Maintenance-free, inch dimensions



型号 Part No.	尺寸 inch Dimensions							负荷KN Load ratings	重量KG Weight				
	d	B	C <sub>1</sub>	h <sub>1</sub>	d <sub>2</sub>	d <sub>3</sub>	W	d <sub>4</sub>	L <sub>3</sub> mm	d <sub>5</sub> 2B	α	Kg <sup>m</sup>	
CF5T	0.3125	0.437	0.312	1.375	0.875	0.500	0.437	0.625	0.687	5/16-24	11	28.693	0.036
CF6T	0.3750	0.500	0.359	1.625	1.000	0.687	0.562	0.719	0.812	3/8-24	11	38.371	0.059
CF7T	0.4375	0.562	0.406	1.812	1.125	0.750	0.625	0.812	0.937	7/16-20	10.5	41.676	0.082
CF8T	0.5000	0.625	0.453	2.125	1.312	0.875	0.750	0.937	1.062	1/2-20	10	67.299	0.132
CF10T	0.6250	0.750	0.484	2.500	1.500	1.000	0.875	1.125	1.375	5/8-18	13	75.271	0.195
CF12T	0.7500	0.875	0.593	2.875	1.750	1.125	1.000	1.312	1.562	3/4-16	12	113.642	0.295

杆端体挤压成型

- 外圈内侧球面贴附PTFE材料。

- 若需装配杆子, 产品型号后加 S, 如CF8TS。

- 若是左旋螺纹, 则在型号后面, 数字前面加 L, 如CF L 8 T

- 产品默认车件。

材料和表面处理方式:

- 杆端体: 中碳钢45, 表面镀锌; 钢球: 轴承钢, 镀硬铬; 带PTFE。
- 杆端体: 可选用不锈钢304, 不锈钢303, 不锈钢316, 表面钝化处理; 钢球: 可用440C不锈钢。

Rod body is pressed around inner ring.

- Outer race is lined with PTFE composite material.

- If assembling with rod, please add suffix “S”, e.g. CF8TS.

- For left-hand thread, please add suffix “L”, e.g. CF L 8 T.

- All with turn part.

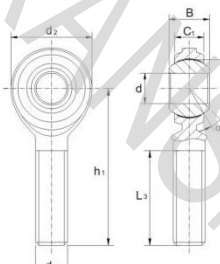
Material and surface treatments:

- Body: medium carbon steel 45, zinc plating; steel ball: bearing steel with hard chrome plating; with PTFE composite material.
- Body: stainless steel 304, stainless steel 303 or stainless steel 316 is optional with surface passivation. Steel ball: alternative stainless steel 440C.

杆端关节轴承 CM..T, CM..TS

DONGZHOU COMPANY

Rod Ends CM..T, CM..TS  
Maintenance-free, inch dimensions



型号 Part No.	尺寸 inch Dimensions							负荷KN Load ratings	重量KG Weight			
	d	B	C <sub>1</sub>	h <sub>1</sub>	d <sub>2</sub>	d <sub>3</sub>	W	d <sub>4</sub>	L <sub>3</sub> mm	d <sub>5</sub> 2A	α	Kg <sup>m</sup>
CM5T	0.3125	0.437	0.312	1.875	0.875	0.625	1.250	5/16-24	11	28.693	10	0.032
CM6T	0.3750	0.500	0.359	1.938	1.000	0.719	1.250	3/8-24	11	38.371	10	0.050
CM7T	0.4375	0.562	0.406	2.125	1.125	0.812	1.375	7/16-20	10.5	41.676	10	0.068
CM8T	0.5000	0.625	0.453	2.438	1.312	0.937	1.500	1/2-20	10	67.299	10	0.109
CM10T	0.6250	0.75	0.484	2.625	1.500	1.125	1.625	5/8-18	13	75.271	10	0.163
CM12T	0.7500	0.875	0.593	2.875	1.750	1.312	1.750	3/4-16	12	113.642	10	0.259

杆端体挤压成型

- 外圈内侧球面贴附PTFE材料。

- 若需装配杆子, 产品型号后加 S, 如CM8TS。

- 若是左旋螺纹, 则在型号后面, 数字前面加 L, 如CM L 8 T

- 产品默认车件。

材料和表面处理方式:

- 杆端体: 中碳钢45, 表面镀锌; 钢球: 轴承钢, 镀硬铬; 带PTFE。
- 杆端体: 可选用不锈钢304, 不锈钢303, 不锈钢316, 表面钝化处理; 钢球: 可用440C不锈钢。

Rod body is pressed around inner ring.

- Outer race is lined with PTFE composite material.

- If assembling with rod, please add suffix “S”, e.g. CM8TS.

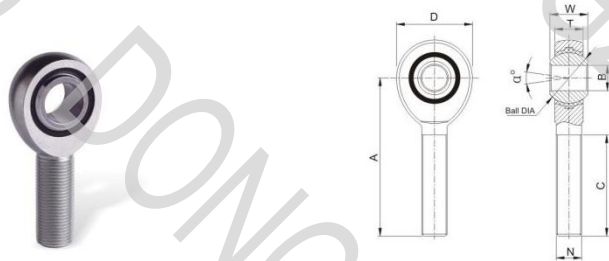
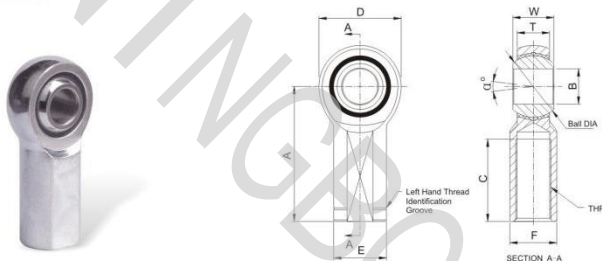
- For left-hand thread, please add suffix “L”, e.g. CM L 8 T.

- All with turn part.

Material and surface treatments:

- Body: medium carbon steel 45, zinc plating; steel ball: bearing steel with hard chrome plating; with PTFE composite material.
- Body: stainless steel 304, stainless steel 303 or stainless steel 316 is optional with surface passivation. Steel ball: alternative stainless steel 440C.





型号 Part No.	尺寸 inch Dimensions										重量KG Weight	
	N Thread UNF-2B	A ±0.015	B ±0.0025 -0.0005	C +0.062 -0.031	D ±0.010	E ±0.010	F +0.002 -0.010	T ±0.005	W +0.0025 -0.005	Ball DIA S B REF		Q° ANGLE
PNF3	10-32	1.062	0.1900	0.562	0.625	0.406	0.312	0.250	0.312	0.437	13	0.018
PNF4	1/4-28	1.312	0.2500	0.750	0.750	0.469	0.375	0.281	0.375	0.500	16	0.027
PNF5	5/16-24	1.375	0.3125	0.750	0.875	0.500	0.437	0.344	0.437	0.625	14	0.038
PNF6	3/8-24	1.625	0.3750	0.937	1.000	0.687	0.562	0.406	0.500	0.719	12	0.063
PNF7	7/16-20	1.812	0.4375	1.062	1.125	0.750	0.625	0.437	0.562	0.812	14	0.086
PNF8	1/2-20	2.125	0.5000	1.187	1.312	0.875	0.750	0.500	0.625	0.937	12	0.140
PNF10	5/8-18	2.500	0.6250	1.500	1.500	1.000	0.875	0.562	0.750	1.125	16	0.204
PNF12	3/4-16	2.875	0.7500	1.750	1.750	1.125	1.000	0.687	0.875	1.312	14	0.304

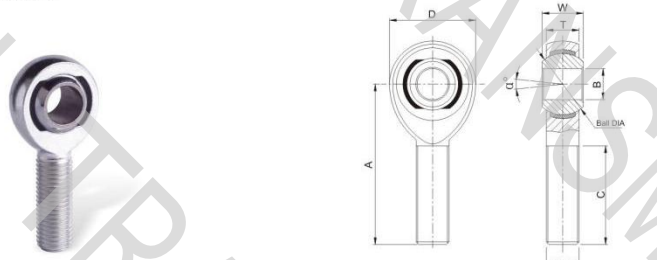
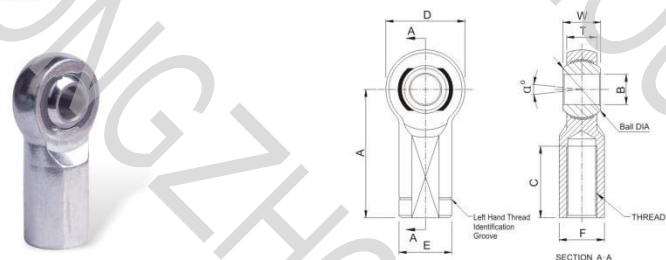
型号 Part No.	尺寸 inch Dimensions										重量KG Weight
	N Thread UNF-2A	A ±0.015	B +0.0025 -0.0005	C +0.062 -0.031	D ±0.010	T ±0.005	W +0.0025 -0.005	Ball DIA S B REF	Q° Misalign Angle	Kg <sup>-1</sup>	
PNM3	10-32	1.250	0.1900	0.750	0.625	0.250	0.312	0.437	13	0.009	
PNM4	1/4-28	1.562	0.2500	1.000	0.750	0.281	0.375	0.500	16	0.018	
PNM5	5/16-24	1.875	0.3125	1.250	0.875	0.344	0.437	0.625	14	0.032	
PNM6	3/8-24	1.938	0.3750	1.250	1.000	0.406	0.500	0.719	12	0.050	
PNM7	7/16-20	2.125	0.4375	1.375	1.125	0.437	0.562	0.812	14	0.068	
PNM8	1/2-20	2.438	0.5000	1.500	1.312	0.500	0.625	0.937	12	0.104	
PNM10	5/8-18	2.625	0.6250	1.625	1.500	0.562	0.750	1.125	16	0.163	
PNM12	3/4-16	2.875	0.7500	1.750	1.750	0.687	0.875	1.312	14	0.258	

材料和表面处理方式：  
- 球体：中碳钢45，表面镀锌处理。可选择不锈钢材质，表面转化处理。  
- 钢球：轴承钢GCr15，镀硬铬。可选择440C不锈钢。  
- 内圈：复合尼龙。  
- 若是左旋螺纹，则在型号后面，数字前面加L，如PNFL 8。

Material and surface treatments:  
- Body: medium carbon steel 45. Zinc plating. Alternative stainless steel with surface passivation.  
- Steel ball: bearing steel GCr15. Hard chrome plating. Alternative stainless steel 440C.  
- Race: nylon.  
- For left-hand thread, please add suffix " L ", e.g. PNFL 8.

材料和表面处理方式：  
- 球体：中碳钢45，表面镀锌处理。可选择不锈钢材质，表面转化处理。  
- 钢球：轴承钢GCr15，镀硬铬。可选择440C不锈钢。  
- 内圈：复合尼龙。  
- 若是左旋螺纹，则在型号后面，数字前面加L，如PNML 8。

Material and surface treatments:  
- Body: medium carbon steel 45. Zinc plating. Alternative stainless steel with surface passivation.  
- Steel ball: bearing steel GCr15. Hard chrome plating. Alternative stainless steel 440C.  
- Race: nylon.  
- For left-hand thread, please add suffix " L ", e.g. PNML 8.



型号 Part No.	尺寸 inch Dimensions										重量KG Weight	
	B +0.0015 -0.0005	W ±0.005	T ±0.005	A ±0.015	D ±0.010	E ±0.010	F ±0.010	Ball DIA REF	C +0.062 -0.031	Thread UNF-2B		Q° ANGLE
PXF3	0.1900	0.312	0.250	1.062	0.625	0.406	0.312	0.437	0.562	10-32	13	0.018
PXF4	0.2500	0.375	0.281	1.312	0.750	0.469	0.375	0.500	0.750	1/4-28	16	0.027
PXF5	0.3125	0.437	0.344	1.375	0.875	0.500	0.437	0.625	0.750	5/16-24	14	0.041
PXF6	0.3750	0.500	0.406	1.625	1.000	0.687	0.562	0.719	0.937	3/8-24	12	0.063
PXF7	0.4375	0.562	0.437	1.812	1.125	0.750	0.625	0.812	1.062	7/16-20	14	0.086
PXF8	0.5000	0.625	0.500	2.125	1.312	0.875	0.750	0.937	1.187	1/2-20	12	0.140
PXF10	0.6250	0.750	0.562	2.500	1.500	1.000	0.875	1.125	1.500	5/8-18	16	0.204
PXF12	0.7500	0.875	0.687	2.875	1.750	1.125	1.000	1.312	1.750	3/4-16	14	0.313
PXF16	1.0000	1.375	1.000	4.125	2.750	1.625	1.500	1.875	2.125	1 1/4-12	17	0.957
PXF16-1	1.0000	1.375	1.000	4.125	2.750	1.625	1.500	1.875	2.125	1-14	17	1.17
PXF16-2	1.0000	1.375	1.000	4.125	2.750	1.625	1.500	1.875	2.125	1-12	17	1.17

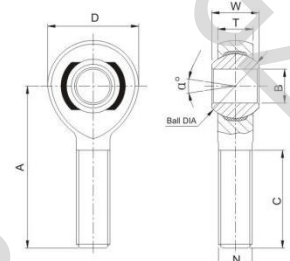
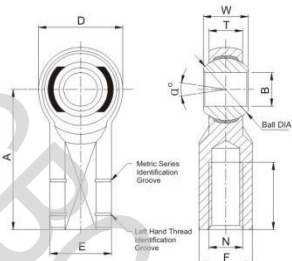
型号 Part No.	尺寸 inch Dimensions										重量KG Weight
	B +0.0015 -0.0005	W ±0.005	T ±0.005	A ±0.015	D ±0.010	Ball DIA REF	C +0.062 -0.031	Thread UNF-3A	Q° Misalign Angle	Kg <sup>-1</sup>	
PXM3	0.1900	0.312	0.250	1.250	0.625	0.437	0.750	10-32	13	0.013	
PXM4	0.2500	0.375	0.281	1.562	0.750	0.500	1.000	1/4-28	16	0.018	
PXM4-5	0.2500	0.375	0.281	1.875	0.875	0.500	1.250	5/16-24	13	0.032	
PXM5	0.3125	0.437	0.344	1.875	0.875	0.625	1.250	5/16-24	14	0.032	
PXM5-6	0.3125	0.437	0.344	1.938	1.000	0.625	1.250	3/8-24	12	0.050	
PXM6	0.3750	0.500	0.406	1.938	1.000	0.719	1.250	3/8-24	12	0.050	
PXM6-7	0.3750	0.500	0.406	2.125	1.125	0.719	1.375	7/16-20	10	0.068	
PXM7	0.4375	0.562	0.437	2.125	1.125	0.812	1.375	7/16-20	14	0.068	
PXM7-8	0.4375	0.562	0.437	2.438	1.312	0.812	1.500	1/2-20	12	0.11	
PXM8	0.5000	0.625	0.500	2.438	1.312	0.937	1.500	1/2-20	12	0.11	
PXM8-10	0.5000	0.625	0.500	2.625	1.500	0.937	1.625	5/8-18	10	0.163	
PXM8-12	0.5000	0.750	0.562	2.875	1.750	0.937	1.750	3/4-16	16	0.190	
PXM10	0.6250	0.750	0.562	2.625	1.500	1.125	1.625	5/8-18	16	0.163	
PXM10-12	0.6250	0.750	0.562	2.875	1.750	1.125	1.750	3/4-16	13	0.258	
PXM12	0.7500	0.875	0.687	2.875	1.750	1.312	1.750	3/4-16	14	0.258	
PXM12-14	0.7500	0.875	0.687	3.375	2.000	1.312	1.875	7/8-14	12	0.399	
PXM14	0.8750	0.875	0.765	3.375	2.000	1.375	2.000	7/8-14	7	0.399	
PXM16	1.0000	1.375	1.000	4.125	2.750	1.875	2.125	1 1/4-12	17	1.093	
PXM16-1	1.0000	1.375	1.000	4.125	2.750	1.875	2.125	1-14	17	0.966	
PXM16-2	1.0000	1.375	1.000	4.125	2.750	1.875	2.125	1-12	17	0.966	

材料和表面处理方式：  
- 球体：合金钢35CrMo，表面调质处理。可选择不锈钢材质，表面转化处理。  
- 钢球：轴承钢GCr15，镀硬铬。可选择440C不锈钢。  
- 内圈：复合尼龙。  
- 若是左旋螺纹，则在型号后面，数字前面加L，如PXF L 8。

Material and surface treatments:  
- Body: alloy steel 35CrMo with heat treating. Alternative stainless steel with surface passivation.  
- Steel ball: bearing steel GCr15 with hard chrome plating. Alternative stainless steel 440C.  
- Race: nylon.  
- For left-hand thread, please add suffix " L ", e.g. PXF L 8.

材料和表面处理方式：  
- 球体：合金钢35CrMo，表面调质处理。可选择不锈钢材质，表面转化处理。  
- 钢球：轴承钢GCr15，镀硬铬。可选择440C不锈钢。  
- 内圈：复合尼龙。  
- 若是左旋螺纹，则在型号后面，数字前面加L，如PXM L 8。

Material and surface treatments:  
- Body: alloy steel 35CrMo with heat treating. Alternative stainless steel with surface passivation.  
- Steel ball: bearing steel GCr15 with hard chrome plating. Alternative stainless steel 440C.  
- Race: nylon.  
- For left-hand thread, please add suffix " L ", e.g. PXM L 8.



杆端关节轴承 Rod Ends

型号 Part No.	尺寸 mm Dimensions											重量KG Weight
N Thread BH	A ±0.4	D ±0.25	E ±0.25	C +1.50 -0.75	F +0.05 -0.25	T ±0.12	W ±0.12	B +0.05 -0.012	Q <sup>o</sup> Metric ANGLE	Ball DIA REF	Kg <sup>o</sup>	
PMXF5	M5×0.8	27.00	16.00	11.00	14.00	9.00	6.25	8.00	5.00	14°	11.10	0.019
PMXF6	M6×1.0	30.00	19.00	13.00	14.00	11.00	7.00	9.00	6.00	13°	12.70	0.029
PMXF8	M8×1.25	36.00	22.25	16.00	17.00	14.00	8.75	12.00	8.00	18°	15.88	0.051
PMXF10	M10×1.5	43.00	27.00	19.00	21.00	17.00	10.50	14.00	10.00	17°	19.05	0.086
PMXF12	M12×1.75	50.00	30.00	22.00	24.00	19.00	12.00	16.00	12.00	17°	22.23	0.124
PMXF14	M14×2.0	57.00	34.75	25.00	27.00	22.00	13.50	19.00	14.00	21°	25.40	0.184
PMXF16	M16×2.0	64.00	38.00	27.00	33.00	22.00	14.25	21.00	16.00	23°	28.58	0.223
PMXF20	M20×1.5	77.00	46.00	34.00	40.00	30.00	18.00	25.00	20.00	20°	34.93	0.436

材料和表面处理方式：  
- 主体：合金钢35CrMo，表面调质处理。可选择不锈钢材质，表面钝化处理。  
- 钢球：轴承钢GCr15，镀硬铬。可选择440C不锈钢。  
- 内圈：复合尼龙。  
- 若是左旋螺纹，则在型号后面，数字前面加L，如PMXFL8。

Material and surface treatments:  
- Body: alloy steel 35CrMo with heat treating. Alternative stainless steel with surface passivation.  
- Steel ball: bearing steel GCr15 with hard chrome plating. Alternative stainless steel 440C.  
- Race: nylon.  
- For left-hand thread, please add suffix " L ", e.g. PMXFL 8.

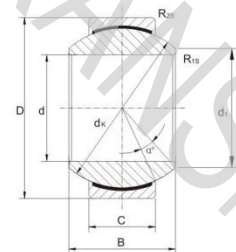
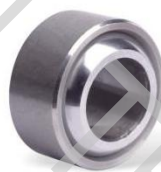
材料和表面处理方式：  
- 主体：合金钢35CrMo，表面调质处理。可选择不锈钢材质，表面钝化处理。  
- 钢球：轴承钢GCr15，镀硬铬。可选择440C不锈钢。  
- 内圈：复合尼龙。  
- 若是左旋螺纹，则在型号后面，数字前面加L，如PMXML8。

Material and surface treatments:  
- Body: alloy steel 35CrMo with heat treating. Alternative stainless steel with surface passivation.  
- Steel ball: bearing steel GCr15 with hard chrome plating. Alternative stainless steel 440C.  
- Race: nylon.  
- For left-hand thread, please add suffix " L ", e.g. PMXML 8.

杆端关节轴承 Rod Ends

向心关节轴承GE..UK

Radial Spherical Plain Bearings GE..UK  
Maintenance-free



型号 Part No.	尺寸 mm Dimensions							负荷KN Load ratings		重量KG Weight		
d	D	B	C	d <sub>1</sub> mm	d <sub>2</sub>	R <sub>15</sub> mm	R <sub>25</sub> mm	Q	动dyn. C	静stat. C <sub>0</sub>	Kg <sup>o</sup>	
GE 6 UK	6	14	6	4	8	10	0.3	0.3	13	3.6	9.1	0.004
GE 8 UK	8	16	8	5	10	13	0.3	0.3	15	5.8	14	0.008
GE 10 UK	10	19	9	6	13	16	0.3	0.3	12	8.6	21	0.011
GE 12 UK	12	22	10	7	15	18	0.3	0.3	10	11	28	0.015
GE 15 UK	15	26	12	9	18	22	0.3	0.3	8	18	45	0.027
GE 17 UK	17	30	14	10	20	25	0.3	0.3	10	22	56	0.041
GE 20 UK	20	35	16	12	24	29	0.3	0.3	9	31	78	0.066
GE 25 UK	25	42	20	16	29	35.5	0.6	0.6	7	51	127	0.119
GE 30 UK	30	47	22	18	34	40.7	0.6	0.6	6	65	166	0.163

- 滑动摩擦面：钢 / PTFE 合成材料。  
- 外圈挤压成型。  
- 外圈球面粘有PTFE合成材料。  
- 内圈球面镀铬。  
- Sliding contact surfaces: steel / PTFE composite material.  
- Outer ring is pressed around inner ring.  
- Outer race is lined with PTFE composite material.  
- Spherical surface of inner ring is chromium plated.

向心关节轴承 Radial Spherical Plain Bearings



**42 向心关节轴承G..PW**  
Radial Spherical Plain Bearings G..PW  
Maintenance-free

DONGZHOU COMPANY



型号 Part No.	尺寸 mm Dimensions					负荷KN Load ratings		重量KG Weight		
d	d <sub>1</sub>	B	C	D	d <sub>2</sub>	Q <sub>静</sub>	Q <sub>动</sub>	重量KG	重量KG	
G 5 PW	5	7.7	8	6	13	11.13	13	6.2	17	0.007
G 6 PW	6	8.9	9	6.75	16	12.700	13	7.5	22	0.010
G 8 PW	8	10.3	12	9	19	15.875	13	12	36	0.016
G 10 PW	10	12.9	14	10.5	22	19.050	13	17	50	0.031
G 12 PW	12	15.4	16	12	26	22.225	13	22	67	0.065
G 14 PW	14	16.8	19	13.5	28	25.400	15	28	86	0.090
G 16 PW	16	19.3	21	15	32	28.575	15	35	107	0.100
G 18 PW	18	21.8	23	16.5	35	31.750	15	47	131	0.125
G 20 PW	20	24.3	25	18	40	34.925	15	51	157	0.180
G 22 PW	22	25.8	28	20	42	38.100	15	62	191	0.210
G 25 PW	25	29.5	31	22	47	42.850	15	77	236	0.295
G 30 PW	30	34.8	37	25	55	50.800	15	103	318	0.425
G 35 PW	35	37.7	43	28	62	57.100	16	130	400	0.500
G 40 PW	40	45.2	49	33	75	66.600	17	179	550	0.900
G 50 PW	50	56.6	60	45	90	82.500	12	302	928	1.640

- 外圈材料为黄铜H62, 钢球轴承钢GCr15, 不电镀, 外圈表面粘有PTFE, 合成材料, 此型号为G..PW.
- 若外圈材料为黄铜H62, 钢球材料为440C不锈钢, 外圈表面粘有PTFE, 合成材料, 此型号为G..PWSS.
- 若外圈材料为碳钢20, 钢球轴承钢GCr15, 不电镀, 外圈表面粘有PTFE, 合成材料, 此型号为ST..PW.
- 若外圈材料为304不锈钢, 钢球材料为440C不锈钢, 外圈表面粘有PTFE, 合成材料, 此型号为SS..PW.
- Out ring in brass H62; steel ball in bearing steel GCr15 without chromium plating; out race is lined with PTFE composite material, the model is G..PW.
- If out ring in brass H62; steel ball in stainless steel 440C; out race is lined with PTFE composite material, the model is G..PWSS.
- If out ring in carbon steel 20; steel ball in bearing steel GCr15 without chromium plating; out race is lined with PTFE composite material, the model is ST..PW.
- If out ring in stainless steel 304; steel ball in stainless steel 440C; out race is lined with PTFE composite material, the model is SS..PW.

**42 向心关节轴承COM.. / HCOM..**  
Radial Spherical Plain Bearings COM.. / HCOM..  
Maintenance required, inch dimensions

DONGZHOU COMPANY

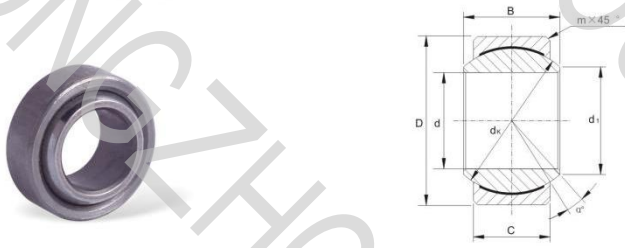


型号 Part No.	尺寸 mm Dimensions							负荷KN Load ratings		重量KG Weight	
d	d <sub>1</sub>	B	C	D	d <sub>2</sub>	m	Q <sub>静</sub>	Q <sub>动</sub>	重量KG	重量KG	
COM 3	4.826	7.44	7.14	5.54	14.29	10.31	0.381	11	14.464	0.006	
COM 4	6.350	9.25	8.71	6.35	16.67	12.70	0.560	13.5	22.015	0.010	
COM 5	7.938	10.64	9.53	7.14	19.05	14.27	0.810	12	28.800	0.014	
COM 6	9.525	13.11	10.31	7.92	20.64	16.66	0.810	10	37.361	0.017	
COM 7	11.113	13.46	11.10	8.71	23.02	17.45	0.810	8.0	42.048	0.021	
COM 8	12.700	16.26	12.70	9.91	25.40	20.65	0.810	9.5	58.934	0.029	
COM 9	14.288	18.03	14.27	11.10	27.78	23.01	0.810	9.5	73.967	0.039	
COM 10	15.875	19.81	15.88	12.70	30.16	25.40	0.810	8.5	94.658	0.050	
COM 12	19.050	23.37	19.05	15.06	36.51	30.15	1.120	9.0	141.982	0.093	
COM 14	22.225	24.89	22.23	17.86	39.69	33.32	1.120	9.5	186.639	0.119	
COM 16	25.400	28.40	25.40	20.24	44.45	38.10	1.120	10	245.534	0.175	
HCOM 16	25.400	34.54	25.40	19.84	50.80	42.85	0.810	9.0	315.010	0.251	
HCOM 19	30.163	40.89	30.15	23.80	60.33	50.80	0.810	8.5	448.049	0.406	
HCOM 20	31.750	40.89	30.15	23.80	60.33	50.80	0.810	8.5	448.049	0.406	
HCOM 24	38.100	47.24	34.93	27.79	69.85	58.72	0.810	8.5	604.710	0.616	
HCOM 28	44.450	53.59	39.67	31.75	79.38	66.68	1.120	8.0	784.495	0.884	
HCOM 32	50.800	59.94	44.45	34.93	88.90	74.60	1.120	8.5	965.485	1.198	

- 滑动摩擦面: 钢/钢
- 外圈材料为碳钢; 内圈材料为轴承钢GCr15, 镀硬铬
- 外圈有压缩型
- 外圈有润滑油槽和油孔
- 英制系列
- Sliding contact surfaces: steel / steel.
- Outer ring is carbon steel; Inner ring is bearing steel GCr15 with hard chrome plating.
- Outer ring is pressed around inner ring.
- Lubricating grooves and holes in the outer ring.
- Dimensions in inches.

**42 向心关节轴承COM..T / HCOM..T**  
Radial Spherical Plain Bearings COM..T / HCOM..T  
Maintenance-free, inch dimensions

DONGZHOU COMPANY

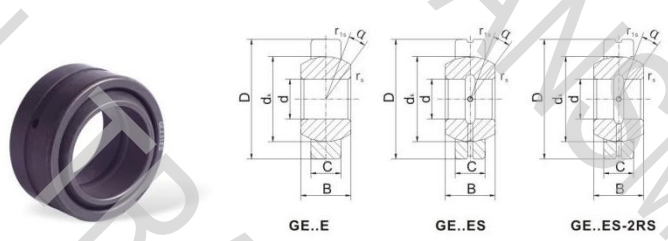


型号 Part No.	尺寸 mm Dimensions					负荷KN Load ratings		重量KG Weight		
d	d <sub>1</sub>	B	C	D	d <sub>2</sub>	m	Q <sub>静</sub>	Q <sub>动</sub>	重量KG	
COM 3 T	4.826	7.44	7.14	5.54	14.29	10.31	0.381	11	21.68	0.006
COM 4 T	6.350	9.25	8.71	6.35	16.67	12.70	0.560	13.5	33.02	0.010
COM 5 T	7.938	10.64	9.53	7.14	19.05	14.27	0.810	12	43.20	0.014
COM 6 T	9.525	13.11	10.31	7.92	20.64	16.66	0.810	10	56.04	0.017
COM 7 T	11.113	13.46	11.10	8.71	23.02	17.45	0.810	8.0	63.07	0.021
COM 8 T	12.700	16.26	12.70	9.91	25.40	20.65	0.810	9.5	86.39	0.029
COM 9 T	14.288	18.03	14.27	11.10	27.78	23.01	0.810	9.5	110.94	0.039
COM 10 T	15.875	19.81	15.88	12.70	30.16	25.40	0.810	8.5	141.96	0.050
COM 12 T	19.050	23.37	19.05	15.06	36.51	30.15	1.120	9.0	212.94	0.093
COM 14 T	22.225	24.89	22.23	17.86	39.69	33.32	1.120	9.5	279.93	0.119
COM 16 T	25.400	28.40	25.40	20.24	44.45	38.10	1.120	10	368.25	0.175
HCOM 16 T	25.400	34.54	25.40	19.84	50.80	42.85	0.810	9.0	472.46	0.251
HCOM 19 T	30.163	40.89	30.15	23.80	60.33	50.80	0.810	8.5	672.00	0.406
HCOM 20 T	31.750	40.89	30.15	23.80	60.33	50.80	0.810	8.5	672.00	0.406
HCOM 24 T	38.100	47.24	34.93	27.79	69.85	58.72	0.810	8.5	906.96	0.616
HCOM 28 T	44.450	53.59	39.67	31.75	79.38	66.68	1.120	8.0	1176.61	0.884
HCOM 32 T	50.800	59.94	44.45	34.93	88.90	74.60	1.120	8.5	1448.06	1.198

- 滑动摩擦面: 钢 / PTFE合成材料
- 外圈材料为碳钢; 内圈材料为轴承钢GCr15, 镀硬铬
- 外圈有压缩型
- 外圈表面粘有PTFE合成材料
- 英制系列
- Sliding contact surfaces: steel / PTFE composite material.
- Outer ring is carbon steel; Inner ring is bearing steel GCr15 with hard chrome plating.
- Outer ring is pressed around inner ring.
- Outer race lined with PTFE composite material.
- Dimensions in inches.

**42 向心关节轴承GE..E / GE..ES / GE..ES-2RS**  
Radial Spherical Plain Bearings GE..E / GE..ES / GE..ES-2RS

DONGZHOU COMPANY



型号 Part No.	尺寸 mm Dimensions							额定载荷KN Load ratings		重量KG Weight	
d	D	B	C	d <sub>1</sub>	r <sub>1</sub> min.	r <sub>2</sub> min.	Q <sub>静</sub>	Q <sub>动</sub>	重量KG	重量KG	
GE4E	4	12	5	3	8	0.3	0.3	16	2	10	0.003
GE5E	5	14	6	4	10	0.3	0.3	13	3.4	17	0.005
GE6E	6	14	6	4	10	0.3	0.3	13	3.4	17	0.004
GE8E	8	16	8	5	13	0.3	0.3	15	5.5	27	0.008
GE10E	10	19	9	6	16	0.3	0.3	12	8.1	40	0.011
GE12E	12	22	10	7	18	0.3	0.3	10	10	53	0.015
GE15ES	15	26	12	9	22	0.3	0.3	8	16	84	0.027
GE17ES	17	30	14	10	25	0.3	0.3	10	21	106	0.041
GE20ES	20	35	16	12	29	0.3	0.3	9	30	146	0.066
GE25ES	25	42	20	16	35.5	0.6	0.6	7	48	240	0.119
GE30ES	30	47	22	18	40.7	0.6	0.6	6	62	310	0.153
GE35ES	35	55	25	20	47	0.6	1	6	79	399	0.233
GE40ES	40	62	28	22	53	0.6	1	7	99	495	0.306
GE45ES	45	68	32	25	60	0.6	1	7	127	637	0.427
GE50ES	50	75	35	28	66	0.6	1	6	156	780	0.546
GE55ES	55	85	40	32	74	0.6	1	7	200	1000	0.939
GE60ES	60	90	44	36	80	1	1	6	245	1220	1.040
GE70ES	70	105	49	40	92	1	1	6	313	1560	1.550
GE80ES	80	120	55	45	105	1	1	6	400	2000	2.310
GE90ES	90	130	60	50	115	1	1	5	488	2440	2.750
GE100ES	100	150	70	55	130	1	1	7	607	3030	4.450
GE110ES	110	160	70	55	140	1	1	6	654	3270	4.820
GE120ES	120	180	85	70	160	1	1	6	950	4750	9.060
GE140ES	140	210	90	70	180	1	1	7	1070	5350	11.020
GE160ES	160	230	105	80	200	1	1	8	1360	6900	14.010
GE180ES	180	260	105	80	225	1.1	1.1	6	1530	7650	18.650
GE200ES	200	290	130	100	250	1.1	1.1	7	2120	10600	28.300

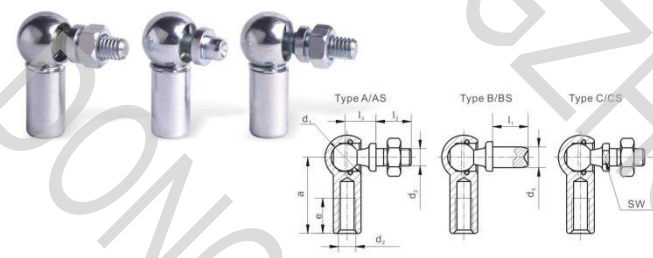
- 滑动摩擦面: 钢 / 钢
- 内外圈材料为轴承钢, 表面磷化处理
- 外圈有一直轴孔
- ES型外圈外表面有润滑油槽和油孔
- 2RS型外圈两面密封圈
- Sliding contact surfaces: steel / steel
- Both outer and inner rings are ball bearing steels, with proper phosphate treatment.
- Outer ring with single split in axial direction.
- Lubricating grooves and holes in the outer and inner rings of type ES.
- Outer ring of type 2RS with lip seals in both sides.

向心关节轴承 Radial Spherical Plain Bearings

向心关节轴承 Radial Spherical Plain Bearings

向心关节轴承 Radial Spherical Plain Bearings

向心关节轴承 Radial Spherical Plain Bearings



尺寸 mm Dimensions								重量KG Weight Kg/1000 pieces for type		
d <sub>1</sub> H8	d <sub>2</sub>	l <sub>1</sub> ±0.3	l <sub>2</sub> ±0.3	e min	d <sub>3</sub> H11	l <sub>3</sub> ±0.2	a ±0.3	SW H14	A and AS C and CS	B and BS
8	M 5	10.2	9	10.2	5	4.0 7.5	22	7	15.20	12.85 13.35
10	M 6	12.5	11	11.5	6	4.5 8.0	25	8	25.20	21.30 22.00
13	M 8	16.5	13	14.0	8	5.0 10.0	30	11	53.10	43.10 45.00
16	M 10 M 12	20.0	16	15.5	10	6.0 13	35	13	103.8	82.30 86.60
19	M 14×1.5 M 16	28.0	20	21.5	14	12 18	45	16	220.9	181.0 188.7

球头球接 Ball Joints

- 1) A, B, C系列球体无外卡; AS, BS, CS系列球体带外卡;
- 2) C, CS系列球头柄有防滑平面;
- 3) 球体可选用左牙;
- 4) 球体可选对边或六角对边;
- 5) 可选球体带防尘罩;
- 6) 可选球体带密封螺母;

材料表面处理方法:

- 1) 球头柄: 中碳钢45; 球体: 低碳钢Q235A; 内卡: 弹簧钢, 表面镀锌处理;
- 2) 可选用不锈钢304; 不锈钢316; 表面转化处理;

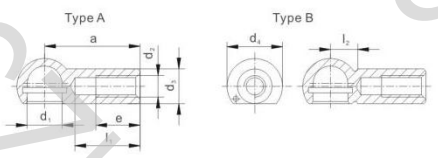
球头球接球座式:

- 1) Type A, B, C without safety clip on the ball socket.
- 2) Type AS, BS, CS with safety clip on the ball socket.
- 3) Ball stud of Type C, CS with spanner surface.
- 4) Alternative left-hand thread for dip ball socket.
- 5) Ball socket with or without spanner surface or hexagon surface as required.
- 6) Ball stud with or without sealing cap as required.
- 7) Ball stud with or without nut as required.

Material and surface treatments:

- 1) Ball stud: medium carbon steel 45; Ball socket: low carbon steel Q235A; Snap ring and safety clip: spring steel; Zinc plating.
- 2) Alternative stainless steel 304; stainless steel 316; Surface passivation.

球座DIN71805  
Ball Sockets DIN71805



尺寸 mm Dimensions								重量KG Weight Kg/1000 pieces for type	
d <sub>1</sub>	d <sub>2</sub>	a ±0.3	d <sub>3</sub> ±0.5	d <sub>4</sub> ±0.5	e min	l <sub>1</sub> max	l <sub>2</sub> ±0.4	A	B
8	M 5	22	8	12.8	10.2	15	5.3	9.0	8.8
10	M 6	25	10	14.8	11.5	17	7.0	14.2	14.1
13	M 8	30	13	19.3	14.0	20	9.1	29.0	28.8
16	M 10	35	16	24.0	15.5	22	11.4	57.0	56.8
16	M 12	35	16	24.0	15.5	22	11.4	57.0	56.8
19	M 14×1.5	45	22	30.0	21.5	28	12.5	125.0	124.8
19	M 14×2	45	22	30.0	21.5	28	12.5	125.0	124.8
19	M 16	45	22	30.0	21.5	28	12.5	125.0	124.8

球头球接 Ball Joints

- 1) A系列无外卡, B系列有带外卡;
- 2) 可选用左牙;
- 3) 可选对边或六角对边;

材料表面处理方法:

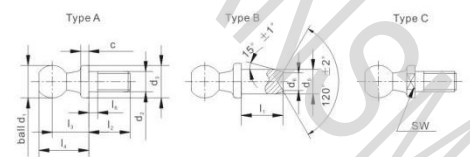
- 1) 低碳钢Q235A, 表面镀锌;
- 2) 可选用不锈钢304, 不锈钢316; 表面转化处理;

- 1) Type B with safety clip.
- 2) Alternative with left-hand thread.
- 3) Alternative with spanner surface or hexagon surface.

Material and surface treatments:

- 1) Low carbon steel Q235A; Zinc plating.
- 2) Alternative stainless steel 304; stainless steel 316; Surface passivation.

球头销DIN71803  
Ball Studs DIN71803



尺寸 mm Dimensions											重量KG Weight Kg/1000 pieces for type		
d <sub>1</sub> H8	d <sub>2</sub>	l <sub>1</sub> ±0.3	l <sub>2</sub> ±0.4	d <sub>3</sub> H14	d <sub>4</sub> H11	l <sub>3</sub> ±0.4	l <sub>4</sub> ±0.3	l <sub>5</sub> ±0.3	l <sub>6</sub> ±0.3	l <sub>7</sub> max	SW H14	A and C	B
8	M 5	4.0 7.5	2.0	8	5	3	10.2	9	12.5	4.0	7	4.55	3.85 4.35
10	M 6	4.5 8.0	2.2	10	6	4	12.5	11	15.5	4.0	8	8.50	7.10 7.80
13	M 8	5.0 10	2.4	13	8	6	16.5	13	18.5	5.3	11	17.7	14.2 16.0
16	M 10 M 12	6.0 13	2.7	16	10	8	20.0	16	23.0	7.3	13	35.1	23.5 29.6
19	M 14×1.5 M 16	12 18	3.0	19	14	10	28.0	20	28.5	10.8	16	71.2	56.2 63.7

球头球接 Ball Joints

- 1) A系列表面手平面, 有螺纹;
- 2) B系列无防滑手平面, 无螺纹;
- 3) C系列有防滑手平面, 有螺纹;
- 4) 球头部位d1硬度不小于HRC52, 硬化深度不小于1mm;

材料表面处理方法:

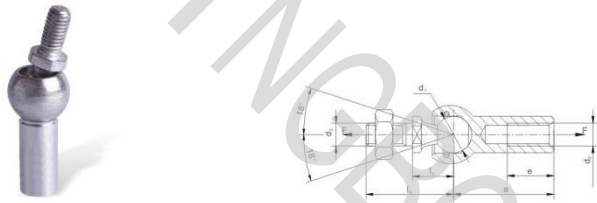
- 1) 中碳钢45, 表面镀锌;
- 2) 可选用不锈钢304, 不锈钢316; 表面转化处理;

- 1) Type A without spanner surface, with thread.
- 2) Type B without spanner surface, without thread.
- 3) Type C with spanner surface, with thread.
- 4) The hardness of ball d1: Min. HRC52; Hardening depth: Min.1mm.

Material and surface treatments:

- 1) Medium carbon steel 45; Zinc plating.
- 2) Alternative stainless steel 304; stainless steel 316; Surface passivation.

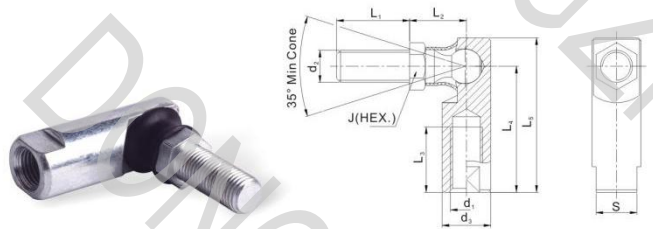




型号 Part No.	尺寸 mm Dimensions							F方向拉力(N) Extraction force F in N	重量KG Weight
	d <sub>1</sub>	d <sub>2</sub>	a	l <sub>1</sub>	l <sub>2</sub>	l <sub>3</sub>	e		Kg per piece
AX-C8M5	8	M 5	22	19.2	9	10.2		30	0.0152
AX-C10M6	10	M 6	25	23.5	11	11.5		40	0.0252
AX-C13M8	13	M 8	30	29.5	13	14.0		60	0.0531
AX-C16M10	16	M 10	35	36.0	16	15.5		80	0.1038
AX-C19M14x1.5	19	M 14x1.5	45	48.0	20	21.5		100	0.2209

球头球接 Ball Joints

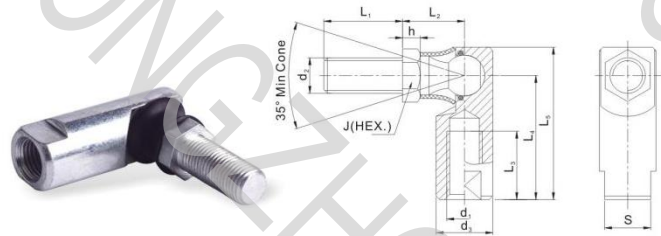
- 1) 壳体可选用左牙。
  - 2) 壳体可选用右牙。
  - 3) 可选择是否防尘罩。
  - 4) 可选择是否装配螺母。
- 材料和表面处理方式：
- 1) 球座：中碳钢45；球头销：中碳钢Q235A；内卡：弹簧钢。表面镀锌处理。
  - 2) 可选用不锈钢304，不锈钢303，不锈钢316。表面钝化处理。
- Alternative left-hand thread for the ball socket.  
Ball socket with or without spanner surface or hexagon surface as required.  
With or without sealing cap as required.  
With or without cap as required.
- Material and surface treatments:  
1) Ball stud: medium carbon steel 45; Ball socket: low carbon steel Q235A. Snap ring and safety clip: spring steel. Zinc plating.  
2) Alternative stainless steel 304, stainless steel 303 or stainless steel 316. Surface passivation.



型号 Part No.	尺寸 inch Dimension										最小轴力 Min Pull Test(lb)	最小径力 Min Shear(lb)
	d <sub>1</sub>	d <sub>2</sub>	d <sub>3</sub>	L <sub>1</sub>	L <sub>2</sub>	L <sub>3</sub>	L <sub>4</sub>	L <sub>5</sub>	S	J		
ES187	10-32-2B	10-32-2A	0.375	0.438	0.438	0.438	0.875	1.063	0.313	0.313	400	400
ES250	1/4-28-2B	1/4-28-2A	0.438	0.563	0.469	0.500	0.969	1.219	0.375	0.375	500	500
ES312	5/16-24-2B	5/16-24-2A	0.500	0.688	0.531	0.563	1.125	1.406	0.438	0.438	650	800
ES375	3/8-24-2B	3/8-24-2A	0.625	0.875	0.688	0.750	1.375	1.688	0.500	0.500	1000	800
ES438	7/16-20-2B	7/16-20-2A	0.750	1.125	0.875	1.000	1.938	2.375	0.625	0.625	2000	2400
ES500	1/2-20-2B	1/2-20-2A	0.750	1.125	0.875	1.000	1.938	2.375	0.625	0.625	2000	2500

球头球接 Ball Joints

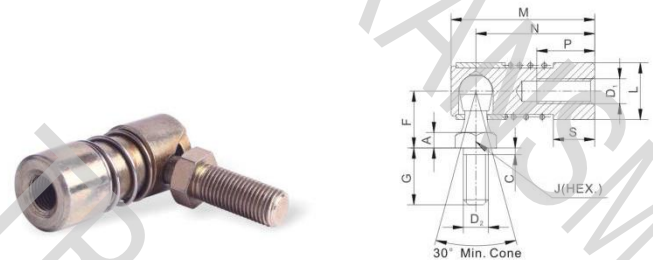
- 1) 挤压型结构。
  - 2) 壳体可选用左牙。
  - 3) 加润滑油，推动灵活。
  - 4) 所有尺寸为英制。
- 材料和表面处理方式：
- 1) 球座：中碳钢45；球头销：中碳钢45、表面镀锌、防尘罩、橡胶。
  - 2) 可选用不锈钢304，不锈钢303，不锈钢316。表面钝化处理。
- Extruded structure.  
Alternative left-hand thread for the ball socket.  
Filled with lubricant so as to circle swing agilely without any block.  
Unless otherwise specified, all dimensions in inches.
- Material and surface treatments:  
1) Ball socket: medium carbon steel 45; Ball stud: medium carbon steel 45. Zinc plating. Sealing cap: rubber.  
2) Alternative stainless steel 304, stainless steel 303 or stainless steel 316. Surface passivation.



型号 Part No.	尺寸 inch Dimension										最小轴力 Min Pull Test(lb)	最小径力 Min Shear(lb)	
	d <sub>1</sub>	d <sub>2</sub>	d <sub>3</sub>	L <sub>1</sub>	L <sub>2</sub>	L <sub>3</sub>	L <sub>4</sub>	L <sub>5</sub>	S	h	J		
FS187	10-32-2B	10-32-2A	0.438	0.438	0.469	0.438	0.969	1.219	0.375	0.125	0.375	1000	500
FS250	1/4-28-2B	1/4-28-2A	0.438	0.563	0.469	0.500	0.969	1.219	0.375	0.125	0.375	1000	700
FS312	5/16-24-2B	5/16-24-2A	0.500	0.688	0.531	0.563	1.125	1.406	0.438	0.156	0.438	1575	900
FS375	3/8-24-2B	3/8-24-2A	0.625	0.675	0.688	0.750	1.375	1.688	0.500	0.188	0.500	1700	1700
FS500	1/2-20-2B	1/2-20-2A	0.750	1.125	0.875	1.000	1.938	2.375	0.625	0.250	0.625	1900	2700

球头球接 Ball Joints

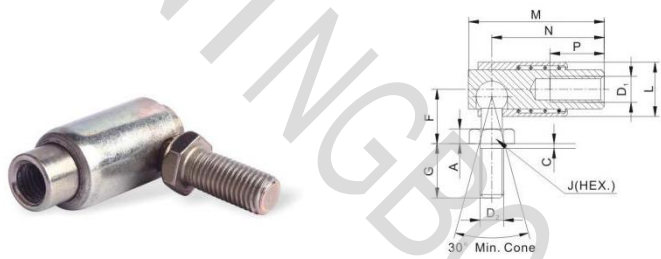
- 1) 带内卡结构。
  - 2) 壳体可选用左牙。
  - 3) 加润滑油，推动灵活。
  - 4) 所有尺寸为英制。
- 材料和表面处理方式：
- 1) 球座：中碳钢45；球头销：中碳钢45；内卡：弹簧钢。表面镀锌，防尘罩：橡胶。
  - 2) 可选用不锈钢304，不锈钢303，不锈钢316。表面钝化处理。
- The structure with snap ring.  
Alternative left-hand thread for the ball socket.  
Filled with lubricant so as to circle swing agilely without any block.  
Unless otherwise specified, all dimensions in inches.
- Material and surface treatments:  
1) Ball socket: medium carbon steel 45; Ball stud: medium carbon steel 45; Snap ring: spring steel. Zinc plating. Sealing cap: rubber.  
2) Alternative stainless steel 304, stainless steel 303 or stainless steel 316. Surface passivation.



型号 Part No.	尺寸 inch Dimensions													最小轴力 Min. Pull Test	最小径力 Min. Shear
	D <sub>1</sub>	D <sub>2</sub>	A	C	F	G	J	L	M	N	P	S			
QI 187	10-32-2B	10-32-2A	.125	.063	.4375	.4375	.3125	.4375	1.094	.9063	.4375	.250	430	500	
QI 250	1/4-28-2B	1/4-28-2A	.125	.063	.4690	.5620	.3750	.5620	1.250	.9690	.610	.350	560	500	
QI 312	5/16-24-2B	5/16-24-2A	.156	.094	.5310	.6870	.4370	.6250	1.453	1.1250	.630	.438	1000	1500	
QI 375	3/8-24-2B	3/8-24-2A	.187	.094	.6870	.8750	.5000	.7500	1.750	1.3750	.812	.470	1580	2400	
QI 500	1/2-20-2B	1/2-20-2A	.250	.094	.8750	1.125	.6250	1.000	2.530	2.0300	1.000	.570	2400	2700	

球头球接 Ball Joints

- 1) 壳体可选用左牙。
  - 2) 加润滑油，推动灵活。
  - 3) 所有尺寸为英制。
- 材料和表面处理方式：
- 1) 球座：低合金Q235A；球头销：中碳钢45；外套：低合金20，表面镀锌，弹簧：不锈钢304。
  - 2) 球座和球头销可选用不锈钢304，不锈钢303，不锈钢316。表面钝化处理。
  - 3) 球座和球头销可选用6061，表面阳极氧化处理。
- Alternative left-hand thread for the ball socket.  
Filled with lubricant so as to circle swing agilely without any block.  
Unless otherwise specified, all dimensions in inches.
- Material and surface treatments:  
1) Ball socket: low carbon steel Q235A; Ball stud: medium carbon steel 45; Shell: low carbon steel 20. Zinc plating. Spring: stainless steel 304.  
2) Ball socket and ball stud: alternative stainless steel 304, stainless steel 303 or stainless steel 316. Surface passivation.  
3) Ball socket and ball stud: alternative aluminum 6061 with anodic oxidation treatment.



型号 Part No.	尺寸 inch Dimensions											最小轴向力 Min. Pull Test lb	最小径向力 Min. Shear lb
	D <sub>1</sub>	D <sub>2</sub>	A	C	F	G	J	L	M	N	P		
QD187	10-32-2B	10-32-2A	.125	.063	.438	.438	.312	.438	1.094	.906	.438	430	650
QD250	1/4-28-2B	1/4-28-2A	.125	.063	.469	.562	.375	.562	1.250	.969	.531	950	800
QD312	5/16-24-2B	5/16-24-2A	.156	.094	.531	.687	.437	.625	1.453	1.125	.605	1000	1000
QD375	3/8-24-2B	3/8-24-2A	.187	.094	.687	.875	.500	.750	1.750	1.375	.812	1250	1250
QD500	1/2-20-2B	1/2-20-2A	.250	.094	.875	1.125	.625	1.000	2.530	2.030	1.000	1900	2000

- 1) 壳体可适用左牙。
- 2) 加润滑油后，摆动灵活。
- 3) 所有尺寸为英制。

**材料和表面处理方式：**

- 1) 球座：低碳钢Q235A，球头帽：中碳钢45，外套：低碳钢20，表面镀锌，弹簧：不锈钢304。
- 2) 球座和球头帽可选用不锈钢304，不锈钢303，不锈钢316，表面钝化处理。
- 3) 球座和球头帽可选用铝6061，表面阳极氧化处理。

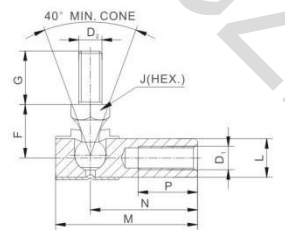
- 1) Alternative left-hand thread for the ball socket.
- 2) Filled with lubricant so as to circle swing agily without any block.
- 3) Unless otherwise specified, all dimensions in inches.

**Material and surface treatments:**

- 1) Ball socket: low carbon steel Q235A, Ball stud: medium carbon steel 45, Shell: low carbon steel 20, Zinc plating, Spring: stainless steel 304.
- 2) Ball socket and ball stud: alternative stainless steel 304, stainless steel 303 or stainless steel 316 with surface passivation.
- 3) Ball socket and ball stud: alternative aluminum 6061 with anodic oxidation treatment.

球头球接 Ball Joints

球头球接 Ball Joints



型号 Part No.	尺寸 inch Dimensions								
	D <sub>1</sub>	D <sub>2</sub>	F	G	J	L	M	N	P
PI-3-3	10-32-2B	10-32-2A	.438	.438	.3125	.3125	1.156	.875	.484
PI-3-4	10-32-2B	1/4-28-2A	.438	.563	.3125	.3125	1.156	.875	.484
PI-4-3	1/4-28-2B	10-32-2A	.438	.438	.3125	.3125	1.250	.969	.531
PI-4-4	1/4-28-2B	1/4-28-2A	.438	.563	.3125	.3125	1.250	.969	.531
PI-4L-4L	1/4-28-2B	1/4-28-2A	.562	.500	.3125	.3400	1.750	1.500	1.120

- 1) 壳体可适用左牙。
- 2) 加润滑油后，摆动灵活。
- 3) 所有尺寸为英制。

**材料和表面处理方式：**

- 1) 球座：低碳钢Q235A，表面镀锌处理，可选用不锈钢304，不锈钢303，不锈钢316，表面钝化处理。
- 2) 球头帽：低碳钢Q235A，表面镀锌处理，可选用不锈钢304，不锈钢303，不锈钢316，表面钝化处理。
- 3) 弹簧卡：弹簧钢，表面镀锌或者达克罗。

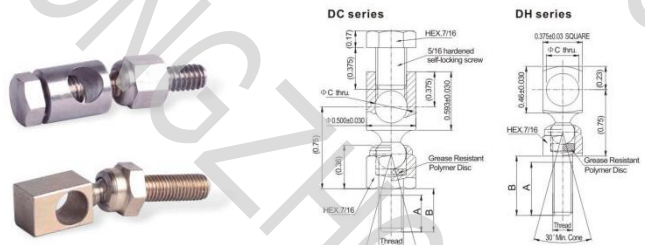
- 1) Alternative left-hand thread for the ball socket.
- 2) Filled with lubricant so as to circle swing agily without any block.
- 3) Unless otherwise specified, all dimensions in inches.

**Material and surface treatments:**

- 1) Ball socket: low carbon steel Q235A, Zinc plating. Alternative stainless steel 304, stainless steel 303 or stainless steel 316 with surface passivation.
- 2) Ball stud: low carbon steel Q235A, Zinc plating. Alternative stainless steel 304, stainless steel 303 or stainless steel 316 with surface passivation.
- 3) Retaining clip: spring steel, Zinc plating or dacroton.

-60-

-61-



型号 Part No.	THREAD	尺寸 inch Dimension			最小轴向力 Min Pull Test(lb)
		A	B	C	
DC-3F-312-320	10-32-2B	0.250	0.312	0.320	250
DC-4F-437-320	1/4-28-2B	0.328	0.437	0.320	250
DC-4F-562-320	1/4-28-2B	0.500	0.562	0.320	250
DC-4C-437-320	1/4-20-2B	0.328	0.437	0.320	250
DC-4C-562-320	1/4-20-2B	0.453	0.562	0.320	250
DC-5F-625-320	5/16-24-2B	0.516	0.625	0.320	250
DC-5F-750-320	5/16-24-2B	0.641	0.750	0.320	250
DH-4F-562-257	1/4-28-2B	0.500	0.562	0.257	250
DH-4C-437-257	1/4-20-2B	0.328	0.437	0.257	250

- 1) 加润滑油后，摆动灵活。
- 2) 所有尺寸为英制。

**材料和表面处理方式：**

- 1) 球体和球头帽：低碳钢Q235A，表面镀锌；可选用不锈钢304，不锈钢303，不锈钢316，表面钝化处理。
- 2) 橡胶垫片：丁腈橡胶。

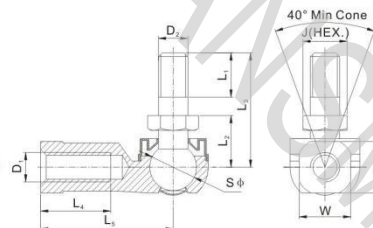
- 1) Filled with lubricant so as to circle swing agily without any block.
- 2) Unless otherwise specified, all dimensions in inches.

**Material and surface treatments:**

- 1) Ball socket & ball stud: low carbon steel Q235A, Zinc plating. Alternative stainless steel 304, stainless steel 303 or stainless steel 316 with surface passivation.
- 2) Rubber disc: Buna-N.

球头球接 Ball Joints

球头球接 Ball Joints



型号 Part No.	尺寸 mm Dimensions										负荷kN Load ratings	重量KG Weight
	D <sub>1</sub> D <sub>1H</sub>	D <sub>2</sub>	L <sub>1</sub> L <sub>1H</sub>	L <sub>2</sub> L <sub>2H</sub>	L <sub>3</sub> L <sub>3H</sub>	L <sub>4</sub> L <sub>4H</sub>	L <sub>5</sub> L <sub>5H</sub>	J	W	S		
BLM5	M5×0.8	M5×0.8	8.0	10.0	20.0	14.0	27.0	8.0	10.0	10.000	2.0	0.017
BLM5LH	M5×0.8-LH	M5×0.8	8.0	10.0	20.0	14.0	27.0	8.0	10.0	10.000	2.0	0.017
BLM6	M6×1	M6×1	11.0	11.0	26.0	16.0	30.0	10.0	11.0	11.112	3.9	0.027
BLM6LH	M6×1-LH	M6×1	11.0	11.0	26.0	16.0	30.0	10.0	11.0	11.112	3.9	0.027
BLM8	M8×1.25	M8×1.25	12.0	14.0	31.0	19.0	36.0	12.0	14.0	12.700	6.0	0.057
BLM8LH	M8×1.25-LH	M8×1.25	12.0	14.0	31.0	19.0	36.0	12.0	14.0	12.700	6.0	0.057
BLM10	M10×1.5	M10×1.5	21.0	17.0	43.0	23.0	43.0	14.0	17.0	15.875	11.0	0.095
BLM10LH	M10×1.5-LH	M10×1.5	21.0	17.0	43.0	23.0	43.0	14.0	17.0	15.875	11.0	0.095
BLM12	M12×1.75	M12×1.75	24.0	19.0	49.0	26.0	50.0	17.0	19.0	19.050	16.0	0.165
BLM12LH	M12×1.75-LH	M12×1.75	24.0	19.0	49.0	26.0	50.0	17.0	19.0	19.050	16.0	0.165
BLM14	M14×2	M14×2	28.0	21.5	62.0	30.0	57.0	19.0	22.0	22.225	19.0	0.300
BLM14LH	M14×2-LH	M14×2	28.0	21.5	62.0	30.0	57.0	19.0	22.0	22.225	19.0	0.300
BLM16	M16×2	M16×2	29.0	23.5	66.0	34.0	64.0	22.0	24.0	22.225	26.0	0.325
BLM16LH	M16×2-LH	M16×2	29.0	23.5	66.0	34.0	64.0	22.0	24.0	22.225	26.0	0.325

- 1) 转动灵活，无卡滞现象。
- 2) 球座球窝内注入适量的润滑油。
- 3) 产品标准符合QC/T327-1999要求。

**材料和表面处理方式：**

- 1) 壳体：高强度球墨铸铁，本色。
- 2) 球头帽：40Cr，表面镀锌处理。
- 3) 防尘罩：聚丁橡胶。

- 1) Move smoothly without stagnation.
- 2) Adequate lubricant should be filled into ball socket.
- 3) Accord with QC/T327-1999 and relevant standards.

**Material and surface treatments:**

- 1) Ball socket: high intensive zinc alloy, Natural color.
- 2) Ball stud: 40Cr alloy steel, Zinc plating.
- 3) Sealing cap: Neoprene rubber.

-62-

-63-





型号 Part No.	尺寸 mm Dimensions																					
	A	B	C	D	E	F	G	H	I	J	K	L	M	N	O	P	Q	R	S	T	X	Y
BRK5558	19.2	29	10	10	12	3	17	24.5	70	7.5	12.5	25	27.5	55	6.6	6.5	/	/	/	/	/	/
BRK4263	20	30	10	10	12	3	17	24.5	70	7.5	12.5	25	27.5	55	4.3	6.5	/	/	/	/	/	/
BDK4266	/	/	10	/	/	3	/	/	70	7.5	12.5	25	27.5	55	/	/	6.5	4.3	30	47.5	M8	16
BDK4696	/	/	10	/	/	3	/	/	70	7.5	12.5	25	27.5	55	/	/	6.5	6.6	30	47.5	M8	16





[www.nbdongzhou.cn](http://www.nbdongzhou.cn)

**NINGBO DONGZHOU TRANSMISSION CO., LTD.**  
**宁波东洲传动件有限公司**

Email: [market@hkdongzhou.com](mailto:market@hkdongzhou.com)

Wechat/whatsapp: +8613345999376